

# Product Catalog 2021



**SUNCOAST®**  
FURNITURE

Designed for Comfort & Durability™

**SEIDEN** CO.  
HOTEL SUPPLIERS ▼

2865 SW 69th Court, Miami, FL 33155. Tel: 305-438-9997  
[www.seidencompany.com](http://www.seidencompany.com)





# Table of Contents

## Restaurant / Café Furniture

- 3 Avalon
- 3 Aurora

## Extruded & Extruded Cast Combination

- 9 South Beach Sling
- 11 Pinnacle Sling & Deep Seating
- 13 Vision Sling
- 15 Vectra Sling
- 16 Vectra Bold
- 17 Vectra Rise Sling & Vectra Tables
- 18 Vectra Bold Sling
- 19 Orleans Sling
- 21 Orleans Cushion
- 23 Madison Cushion & Sling
- 25 Maya Sling
- 27 Rosetta Sling
- 29 Rosetta Cushion
- 31 Rosetta Strap
- 33 Seascape Sling
- 35 Sanibel Strap
- 37 Sanibel Cross Strap
- 38 Sanibel Sling
- 38 Maya Strap

## Tables & Accessories

- 39 Knock Down Glass & Acrylic Dining & Gathering Height Tables
- 40 Knock Down Glass Bar Height Tables
- 40 Knock Down Fiberglass Tables
- 41 Carts, Bars Occasional & Side Tables
- 42 Polymer Slat Tables
- 42 Acacia Porcelain Tables
- 43 Basketweave Cast Aluminum Tops
- 43 Impressions Aluminum Table Tops
- 43 Slat Tables
- 44 Knock Down Aluminum Tables
- 45 Marine Grade Polymer Tables

## Wicker Collections

- 47 Kona

**We offer Nesting and Stacking Furniture**

**Stacking = Like Plates**

**Nesting = Like Bowls**

## Umbrellas, Pillows & Finishes

- 48 Umbrellas & Accessories
- 51 Accent Pillows
- 51 Fringe & Cording
- 52 Frame Finishes
- 53 Strap Colors

## Manufacturing

- 54 Why Choose Suncoast?
- 58 Suncoast Capability Statement





## Commercial Outdoor Patio Furniture for Restaurants, Bars, Pool Decks and More

Suncoast Furniture manufactures premium quality commercial grade outdoor furniture that is built to last, stylish and affordable. We have everything you need to create the perfect outdoor environment for your business that showcases its uniqueness.

All of our product is made with the finest materials and designed to withstand the demands of commercial wear and tear, variable temperatures, UV rays, rain and wind. Our metal furniture is lightweight to be functional and moved around easily, yet strong and made to last.



## Customizable Restaurant/Café Furniture

The concept behind the Restaurant Collection from Suncoast Furniture® is to provide an architect, designer, restaurant, café, or purchasing agent with a customizable piece of furniture that is unique in style & color specifically tailored for their project. The dining chairs, barstools and tables are designed and specified in size specifically for restaurant and café seating, and to maximize the space for your outdoor areas. With 2 frame styles, 3 seat and back patterns, and 15 frame colors to choose from, the options are practically endless!



### Custom Laser Cut Logos & Patterns Available!

Contact your local sales representative for details!

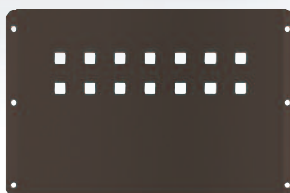
### Tables



TOP100 Aluminum Table Top 24" x 24"  
TOP101 Aluminum Table Top 30" x 30"  
TOP102 Aluminum Table Top 36" x 36"  
TOP103 Aluminum Table Top 36" x 48"

Select top from above and base from below.  
PED106 Pedestal Base – Dining Height  
PED107 Pedestal – Bar Height

### Back Patterns



A2349 Square

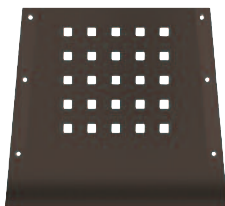


A2354 Brick



A2405 Natural

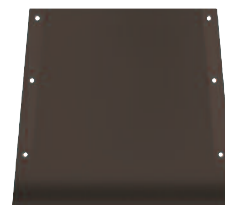
### Seat Patterns



A2356 Square



A2361 Brick



A2406 Natural





## Chairs



**E097 Avalon**  
Back Height 33"  
Seat Height 18"  
Depth 23" / Width 18"  
Weight 8.5



**E096 Avalon with Arms**  
Back Height 33"  
Seat Height 18"  
Arm Height 26"  
Depth 23" / Width 22"  
Weight 10.5 lb



**E197 Aurora**  
Back Height 33"  
Seat Height 18"  
Depth 23" / Width 18"  
Weight 8.5 lb

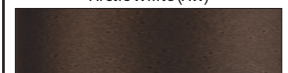


**E196 Aurora with Arms**  
Back Height 33"  
Seat Height 18"  
Arm Height 26"  
Depth 23" / Width 22"  
Weight 10.5 lb

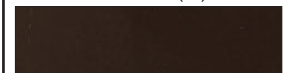
## Colors



Arctic White (AW)



Amber Gold (AG)



Espresso (ES)



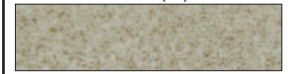
Ebony (EB) Textured Black



Mahogany (MH)



Sahara (SH)



Beach (BE)



Nickel (NI)



Cabernet (CA)



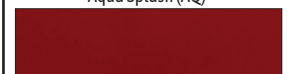
Sandalwood (SD)



Platinum (PL)



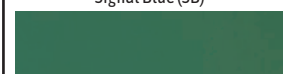
Aqua Splash (AQ)



Carmine Red (CR)



Signal Blue (SB)



Traffic Green (TG)

## Barstools



**E099 Avalon**  
Back Height 45"  
Seat Height 30"  
Depth 23" / Width 18"  
Weight 12 lb



**E098 Avalon with Arms**  
Back Height 45"  
Seat Height 30"  
Arm Height 37"  
Depth 23" / Width 22"  
Weight 14.5 lb



**E199 Aurora**  
Back Height 45"  
Seat Height 30"  
Depth 23" / Width 18"  
Weight 12 lb



**E198 Aurora with Arms**  
Back Height 45"  
Seat Height 30"  
Arm Height 37"  
Depth 23" / Width 22"  
Weight 14.5 lb





Shown in  
Upholstery Fabric B493 Nutmeg  
Cushion Fabric B349 Bay Brown  
Welt B831 Antique Beige



D833 Left Arm Section  
Cushion #SU20/Fab #/Welt #  
L31.5xW26xH31 • Weight 35 lbs.



D832 Right Arm Section  
Cushion #SU19/Fab #/Welt #  
L31.5xW26xH31 • Weight 35 lbs.



D830 Corner Section  
Cushion #SU17/Fab #/Welt #  
L31.5xW31.5xH31 • Weight 47 lbs.



D831 Armless Section Chair  
Cushion #SU18/Fab #/Welt #  
L31xW22xH31 • Weight 30 lbs.



D8T40C Cocktail Table  
L23xW40xH18 • Weight 50 lbs.



D8T23E 23" Side Table  
L23xW23xH22 • Weight 19 lbs.

Also available but not shown:  
D8T30C 30" Square Cocktail Table  
L23xW23xH21 • Weight 35 lbs.



# Summer Upholstered Furniture

When ordering, use  
Cushion # (below each item) / Fabric # / Weights include cushion.

## RUST PROOF

Powder Coated Aluminum Frames with  
YOUR CHOICE of WATER REPELLENT Fabrics



D800 Dining Chair with Arms  
Cushion #SU10/Fab #/Welt #  
L24xW24.5xH32.5 • Weight 17 lbs.



D806 Armless Dining Chair  
Cushion #SU11/Fab #/Welt #  
L24.5xW20.5xH32.5 • Weight 14 lbs.



D827 Leisure Swivel Tilt Chair  
Cushion #SU21/Fab #/Welt #  
L31.5xW30xH31 • Weight 45 lbs.



D810 Sofa  
Cushion #Su13/Fab #  
L32xW74xH31 • Weight 65 lbs.



D812 Leisure Chair  
Cushion #SU15/Fab #  
L32xW30xH31 • Weight 30 lbs.



D834 Ottoman  
Cushion #SU16/Fab #/Welt #  
L28xW24xH18 • Weight 25 lbs.



D823 Chaise Lounge - Stacking  
Cushion #SU12/Fab #/Welt #  
L76xW26xH43 • Weight 45 lbs.



D819 Loveseat  
Cushion #SU14/Fab #  
L32xW52xH31 • Weight 47 lbs.







# Vectra Breeze Upholstered Furniture

## RUST PROOF

Powder Coated Aluminum Frames with  
YOUR CHOICE of WATER REPELLENT Fabrics



E912 Leisure Chair  
Cushion #VE06  
L32xW40xH31 • Weight 45 lbs.



E927 Armless Section  
Cushion #VE03  
L32xW28xH31 • Weight 35 lbs.



E923 Corner/End Section  
Cushion #VE02  
L32xW32xH31 • Weight 42 lbs.



E924 Right Arm Chair  
Cushion #VE08  
L32xW32xH31 • Weight 40 lbs.



E926 Left Arm Chair  
Cushion #VE09  
L32xW32xH31 • Weight 40 lbs.

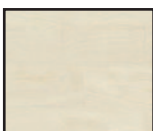


E925 Ottoman  
Cushion #VE04  
L28xW32xH17 • Weight 30 lbs.



E9T3232 32" Square Coffee Table  
L32xW32xH17 • Weight 80 lbs.

### Available Tile Colors:



Navona



Silver



E919 Loveseat  
Cushion #VE05  
L32xW68xH31 • Weight 65 lbs.

Includes throw pillows ME216 for each seating section.







# South Beach Sling Cast Combination

*Padded Sling Available*



9203 Hi-Back Dining Chair  
L31xW27xH35 • Weight 21 lbs.  
Sling: RSL120



9226 Gathering Height Chair  
L31xW27xH43 • Weight 35 lbs.  
Sling: RSL120



9205 Stationary Bar Chair  
L31xW27xH49 • Weight 26 lbs.  
Sling: RSL120



9216 Hi-Back Swivel Tilt Chair  
L31xW27xH35 • Weight 29 lbs.  
Sling: RSL120



9212 Leisure Chair  
L31xW28xH35 • Weight 28 lbs.  
Sling: RSL156



9219 Loveseat  
L31xW50xH35 • Weight 42 lbs.  
Sling: RSL156



9210 Sofa  
L31xW72xH35 • Weight 64 lbs.  
Sling: RSL156



9213 Chaise Lounge  
L78xW31xH41 • Seat Height 15"  
Weight 38 lbs.  
Sling: RSL113





Shown in  
Finish Walnut / Fabric D455 Chance Blue Haze  
Tops 1495



# Pinnacle Sling & Cushion Aluminum

*Padded Sling Available*



E621 Hi Back Dining  
L31 x W28 x H42  
Weight 22 lbs.  
Sling: RSL123



E641 Supreme Dining  
L31 x W28 x H46  
Weight 22 lbs.  
Sling: RSL124



E622 Hi Back Swivel  
L31 x W28 x H42  
Weight 27 lbs.  
Sling: RSL123



E642 Supreme Swivel Rocker  
L31 x W28 x H46  
Weight 27 lbs.  
Sling: RSL124



E644 Gathering  
L31 x W28 x H48  
Weight 28 lbs.  
Sling: RSL124



E645 Bar Stool  
L31 x W28 x H54 • Weight 30 lbs.  
Sling: RSL124



E613 Chaise Lounge with Wheels  
L72 x W30 x H43 • Seat Height 15"  
Weight 43 lbs.  
Sling: RSL113



E730 Sofa  
L33 x W78 x H37  
Weight 70 lbs.  
Cushion: PN29



E6T44G Gathering Table (44")  
L44 x W44 x H34  
Weight 59 lbs.



E6T20P Beverage Stand  
L20 x W20 x H33  
Weight 18 lbs.



E739 Love Seat  
L33 x W54 x H37  
Weight 60 lbs.  
Cushion: PN25



E727 Leisure Swivel Tilt  
L35 x W20 x H37  
Weight 40 lbs.  
Cushion: PN05



E712 Leisure  
L35 x W20 x H37  
Weight 30 lbs.  
Cushion: PN03



E6T50D Dining Table (50")  
E6T44D Dining Table (44")  
L50 x W50 x H28  
Weight 52 lbs.



E6T45 Bar Height Table (40")  
L44 x W44 x H40  
Weight 55 lbs.



E6T20 End Table  
L20 x W20 x H20  
Weight 17 lbs.



E704 Ottoman  
L18 x W24 x H14  
Weight 10 lbs.  
Cushion: PN01



E6T44C Cocktail Table  
L44 x W44 x H22  
Weight 50 lbs.

*\*Approved for commercial use*







# Vision Sling Aluminum Extrusion

Padded Sling Available • Polymer Arms may be added to any Vision arm.



7903 Dining Chair  
L26 x W25 x H34 • Weight 14 lbs.  
Sling: RSL137



7902 Dining Chair-Stackable  
L36 x W25 x H34 • Weight 15 lbs.  
Sling: RSL137



7916 Swivel Tilt  
L26 x W25 x H34 • Weight 21 lbs.  
Sling: RSL137



7941 Dining Chair with Poly Arms  
L26 x W25 x H35 • Weight 18 lbs.  
Sling: RSL137



7926 Gathering Chair  
L29 x W25 x H41 • Weight 19 lbs.  
Sling: RSL137

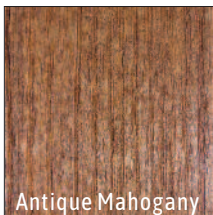


7925 Swivel Gathering Chair  
L27 x W25 x H41 • Weight 15 lbs.  
Sling: RSL137

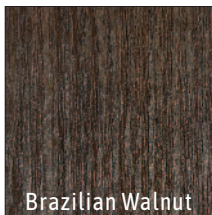


7905 Barstool  
L29 x W25 x H47 • Weight 22 lbs.  
Sling: RSL137

## Six Polymer colors to choose from



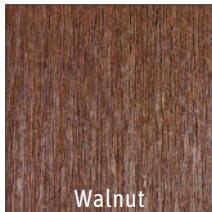
Antique Mahogany



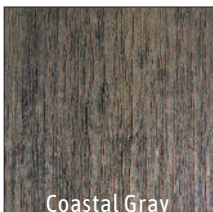
Brazilian Walnut



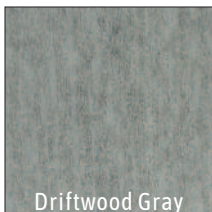
Birchwood



Walnut



Coastal Gray



Driftwood Gray



7913 Chaise Lounge-Stackable  
L79 x W28 x H36 • Seat Height 12" • Weight 50 lbs.  
SL010 Optional Head Pillow  
Sling: RSL138



7909 Love Seat Glider  
L28 x W45 x H34 • Weight 45 lbs.  
Sling: RSL137 x 2

Designed by Rob Pluer

\*Approved for commercial use



# Vectra Bold Sling Aluminum Extrusion

**VECTRA BOLD**

*Padded Sling Available*



E430 Vectra Sling Dining  
W26.5 x H38 x D30 • Weight 25 lbs.



E435 Vectra Sling Leisure  
W29.5 x H37.5 x D32 • Weight 30 lbs.



E431 Vectra Sling Swivel Tilt  
W26.5 x H38 x D30 • Weight 35 lbs.



E437 Vectra Sling Sofa  
W77 x H37.5 x D32 • Weight 70 lbs.



E436 Vectra Sling Loveseat  
W53 x H37.5 x D32 • Weight 55 lbs.

**SLEEK  
CONTEMPORARY  
DESIGN**





# Vectra Bold Cushion Aluminum Extrusion

## ***VECTRA*** BOLD CUSHION



E440 Vectra Bold Cushion Dining  
W29.5xH38.5xD32.5 • Weight 35 lbs.



E441 Vectra Bold Cushion Loveseat  
W53xH38.5xD32.5 • Weight 55 lbs.



E442 Vectra Bold Cushion Sofa  
W77.5xH8.5xD32.5 • Weight 65 lbs.

**SLEEK  
CONTEMPORARY  
DESIGN**





# Vectra Rise Sling Aluminum Extrusion

**VECTRA RISE**

**SLEEK  
CONTEMPORARY  
DESIGN**



E420 Vectra Rise Lounge Armless, without Wheels - Stackable  
L81 x W25.5 x H38 • Weight 18 lbs.  
Sling: RSL162



E421 Vectra Rise Lounge Armless with Wheels - Stackable  
L81 x W29 x H38 • Weight 20 lbs.  
Sling: RSL162

*Available but not shown:*

E422 Chaise Lounge - Stackable  
With Arms • With Wheels  
Weight 20 lbs.  
Sling: RSL162

*Also available in Standard Height:*

E423 Chaise Lounge - Stackable  
With Arms • With Wheels  
Sling: RSL162



*Base included!*



Square

Slat

Verona

**Square Design**  
Occasional  
E4T18S 18" Square Dining  
E4T30S 30" Square  
E4T36S 36" Square

**Slat Design**  
Occasional  
E4T18 18" Square Dining  
E4T30 30" Square  
E4T36 36" Square

**Verona Design**  
Occasional  
1818VPA 18" Square Dining  
3030VPA 30" Square  
3636VPA 36" Square



# Vectra Bold Sling Aluminum Extrusion

**VECTRA BOLD**

*Padded Sling Available*

**SLEEK  
CONTEMPORARY  
DESIGN**



E493 Vectra Bold Lounge with Arms & Wheels - Stackable  
L81xW29xH33 • Weight 32 lbs.  
Sling: RSL159



E494 Vectra Bold Hi Seat Lounge - Stackable  
L81xW29xH39 • Weight 43 lbs.  
Sling: RSL159

*Also available in Standard Height:*

- E490 Vectra Bold Lounge - Stackable  
(No Arms / No Wheels)  
Sling: RSL159
- E491 Vectra Bold Lounge with Wheels - Stackable  
(No Arms)  
Sling: RSL159
- E492 Vectra Bold Lounge with Arms - Stackable  
(No Wheels)  
Sling: RSL159

*Also available in Hi Seat:*

- E495 Vectra Bold Hi Seat Lounge with Wheels - Stackable  
(No Arms)  
Sling: RSL159
- E496 Vectra Bold Hi Seat Lounge with Arms - Stackable  
(No Wheels)  
Sling: RSL159
- E497 Vectra Bold Hi Seat Lounge - Stackable  
with Arms & Wheels  
Sling: RSL159



E499 Vectra Bold Hi Seat Double Lounge - Stackable  
with Arms & Wheels  
L81xW52xH39 • Weight 68 lbs.  
Sling: RSL159

*Also available in Double Lounge:*

- E498 Vectra Bold Hi Seat Double Lounge - Stackable  
with Wheels (No Arms)  
Sling: RSL159

*Stacking Option Available  
on all Vectra Chaises with Wheels*







# Orleans Sling Aluminum Extrusion

*Padded Sling Available*



8503 Hi-Back Dining Chair  
L29 x W24 x H37 • Weight 18 lbs.  
Sling: RSL123



8531 Supreme Dining Chair  
L29 x W24 x H41 • Weight 18 lbs.  
Sling: RSL124



8532 Supreme Swivel Tilt  
L29 x W24 x H41 • Weight 23 lbs.  
Sling: RSL124



8516 Hi-Back Swivel Tilt  
L29 x W24 x H37 • Weight 22 lbs.  
Sling: RSL124



8544 Hi-Back Swivel Gathering Chair  
L29 x W24 x H46 • Weight 28 lbs.  
Sling: RSL123



8508 Recliner  
L49 x W27 x H41 • Weight 27 lbs.  
Sling: RSL108



8513 Chaise Lounge  
L79 x W29 x H40 • Seat Height 15"  
Weight 38 lbs.  
Sling: RSL113



8539 Supreme Loveseat Glider  
L31 x W43 x H43 • Weight 41 lbs.  
Sling: RSL124 x 2







# Orleans Cushion Aluminum Extrusion



8603 Hi-Back Dining Chair  
L35xW26xH42 • Weight 27 lbs.  
Cushion: OW01



8616 Hi-Back Swivel Tilt Chair  
L35xW26xH42 • Weight 32 lbs.  
Cushion: OW07



8609 Hi-Back Loveseat Glider  
L37xW48xH41 • Weight 55 lbs.  
Cushion: OW04



8613 Chaise Lounge  
L76xW28xH38 • Weight 46 lbs.  
Cushion: OW05



8620 Sofa Glider  
L35xW70xH41 • Weight 85 lbs.  
Cushion: OW08



8604 Ottoman  
L18xW25xH17 • Weight 12 lbs.  
Cushion: OW02

For Throw Pillows and Cord & Fringe options available for this collection, see page 51. Weights include cushion.

Designed by Suncoast Furniture

\*Approved for commercial use





Frame Finish Platinum / Table 48SLPA 48" Round with Fabric C668



Leisure Chair, Loveseat and Sofa Shown in:  
Frame Finish Mahogany / Cushion Fabric B664 Frequency Sand with Welt Fabric B597 Canvas Natural / Pillow E662 Kuna Sand

Ottoman and Leisure Swivel Tilt Chair Shown in:  
Frame Finish Mahogany / Cushion Fabric B663 Decade Sand with Welt Fabric B664 Frequency Sand  
Pillow B664 Frequency Sand



# Madison Cushion/Sling Aluminum Extrusion

*Padded Sling Available*



F232 Swivel Tilt Chair  
L27xW25xH43  
Sling: RSL124



F231 Supreme Dining Chair  
L27xW25xH43  
Sling: RSL124



D912 Leisure Chair  
L35xW28xH40 • Weight 35 lbs.  
Cushion: MS01

*Available but not shown:*

F244 Swivel Gathering Chair; Sling: RSL123

F245 Swivel Bar Stool; Sling: RSL123



D904 Ottoman  
L35xW28xH39 • Weight 15 lbs.  
Cushion: MS05



D913 Wide Chaise Lounge  
L81xW45xH42  
Arm Height 25" • Seat Height 18"  
Cushion: MS06



D919 Love Seat  
L35xW52xH40 • Weight 65 lbs.  
Cushion: MS02



D910 Sofa  
L35xW76xH40 • Weight 75 lbs.  
Cushion: MS03



D927 Leisure Swivel Tilt Chair  
L35xW28xH40 • Weight 50 lbs.  
Cushion: MS04

*For Throw Pillows and Cord & Fringe options available for this collection, see page 51. Weights include cushion.*

Designed by Suncoast Furniture







# Maya Sling Aluminum Extrusion

*Padded Sling Available*



9331 Supreme Dining Chair  
L30xW25xH41 • Weight 19 lbs.  
Sling: RSL122



9303 Hi-Back Dining Chair  
L30xW25xH37 • Weight 16 lbs.  
Sling: RSL103



9333 Supreme Sled Dining Chair  
L30xW25xH41 • Weight 20 lbs.  
Sling: RSL122



9316 Hi-Back Swivel Tilt Chair  
L30xW25xH37 • Weight 29 lbs.  
Sling: RSL103



9325 Gathering Barstool  
L31xW25xH43 • Weight 29 lbs.  
Sling: RSL100



9105 Gathering Chair  
L31xW24xH41  
Sling: RSL100



9302 Dining Chair - Nesting  
L30xW25xH37 • Weight 14 lbs.  
Sling: RSL100



9308 Recliner  
L51xW28xH42 • Weight 23 lbs.  
Sling: RSL108



9106 Barstool  
L31xW24xH47  
Sling: RSL100

9343 18" Seat Height Chaise Lounge  
- Nesting  
L81xW29xH41 • Weight 35 lbs.  
Sling: RSL125



9309 Hi-Back Loveseat Glider  
L30xW44xH39 • Weight 40 lbs.  
Sling: RSL103 x 2



9304 Ottoman  
L22xW25xH16.5 • Weight 11 lbs.  
Sling: RSL104







# Rosetta Sling Cast Combination

*Padded Sling Available*



4603 Hi-Back Dining Chair - Stackable  
L30xW25xH37 • Weight 18 lbs.  
Sling: RSL123



4616 Hi-Back Swivel Tilt Chair  
L30xW25xH37 • Weight 25 lbs.  
Sling: RSL123



4609 Hi-Back Loveseat Glider  
L31xW46xH39 • Weight 40 lbs.  
Sling: RSL126 x 2



4613 Chaise Lounge - Stackable  
L80xW30xH41 • Seat Height 15" • Weight 36 lbs.  
Sling: RSL113



4608 Recliner  
L51xW28xH42 • Weight 28 lbs.  
Sling: RSL108



4604 Ottoman  
L22xW24xH17 • Weight 11 lbs.  
Sling: RSL104





Shown in:  
Finish Mahogany / Fabric B530 Davidson  
Table 48PA/MH



# Rosetta Cushion Cast Combination



5403 Hi-Back Dining Chair  
L30xW25xH38 • Weight 19 lbs.  
Cushion: CL203



5416 Hi-Back Swivel Tilt Chair  
L30xW25xH38 • Weight 27 lbs.  
Cushion: CL203



5408 Recliner  
L54xW26xH38 • Weight 12 lbs.  
Cushion: CL108



5404 Ottoman  
L22xW24xH17 • Weight 12 lbs.  
Cushion: CL104



5409 Hi-Back Loveseat Glider  
L31xW46xH39 • Weight 53 lbs.  
Cushion: CL209



5413 Chaise Lounge  
L80xW30xH41 • Seat Height 15" • Weight 45 lbs.  
Cushion: CL113



5412 Leisure Chair  
L30xW25xH35 • Weight 26 lbs.  
Cushion: RS05



5410 Sofa  
L70xW29xH35 • Weight 65 lbs.  
Cushion: RS04



5419 Loveseat  
L53xW29xH35 • Weight 55 lbs.  
Cushion: RS08



5428 Glider Rocker  
L29xW29xH35 • Weight 26 lbs.  
Cushion: RS06

For Throw Pillows and Cord & Fringe options available for this collection, see page 51. Weights include cushion.

Designed by Rob Pluer

\*Approved for commercial use





Shown in:  
Finish Antique Silver / Tops 1207  
Strap Antique Silver Textured



# Rosetta Strap Aluminum Extrusion



490S Dining Chair - Stackable  
L28xW25xH35 • Weight 14 lbs.



405S Barstool  
L28xW25xH47 • Weight 23 lbs.



413S Chaise Lounge - Stackable  
L84xW28xH39 • Weight 16 lbs.





Shown in:  
Finish Pebble / Table 48KD / Fabric B324 Kiwi  
Umbrella 910 / Umbrella Base 735



# Seascape Sling Aluminum Extruded

*Padded Sling Available*



D000 Dining Chair – Nesting  
L29xW23xH37 • Weight 15 lbs.  
Sling: RSL100



D003 Hi-Back Dining Chair  
L30xW23xH38 • Weight 22 lbs.  
Sling: RSL103



7501 Cafe Chair-Stackable  
L27xW22xH33 • Weight 10 lbs.  
Sling: RSL117



D011 Swivel Tilt  
L29xW23xH37 • Weight 17 lbs.  
Sling: RSL100



D016 Hi-Back Swivel Tilt  
L30xW23xH38 • Weight 24 lbs.  
Sling: RSL103



D013 Chaise Lounge – Nesting  
L81xW27xH42 • Seat Height 15" • Weight 35 lbs.  
Sling: RSL125







# Sanibel Strap Aluminum Extrusion



117S Sand Chair  
Stackable  
L27xW22xH23 • Weight 11 lbs.



100S Dining Chair  
Nesting  
L32xW23xH35 • Weight 12 lbs.



105S Barstool  
L25xW18xH31 • Weight 21 lbs.



113S Chaise Lounge – Nesting  
L80xW29xH39 • Weight 24 lbs.



123S Chaise Lounge - Arm  
L80xW29xH39 • Weight 27 lbs.



143S 18" Seat-Height Chaise – Nesting  
L80xW29xH45 • Weight 30 lbs.



144S 18" Seat-Height Chaise - Arm  
L80xW29xH45 • Weight 37 lbs.



# Sanibel Cross Strap Aluminum Extrusion



160S Dining  
Nesting  
L32xW28xH35 • Weight 12 lbs.



125S Barstool  
L25xW18xH47 • Weight 21 lbs.



127S Sand Chair  
Nesting  
L27xW22xH23 • Weight 11 lbs.



163S Chaise Lounge - Nesting  
L80xW29xH39 • Weight 25 lbs.



173S Chaise Lounge - Arm  
L80xW29xH39 • Weight 30 lbs.



153S 18" Seat-Height Chaise - Nesting  
L80xW29xH45 • Weight 30 lbs.



154S 18" Seat-Height Chaise - Arm  
L80xW29xH45 • Weight 35 lbs.



# Sanibel Sling Aluminum Extrusion



1903 Dining – Nesting  
L30xW22xH36 • Weight 12 lbs.  
Sling: RSL100



1917 Sand Chair  
L22xW27xH23  
Sling: RSL143



1905 Bar Stool  
L20xW23xH43 • Sling: RSL144



1913 Chaise Lounge – Nesting  
L76xW28xH38 • Weight 21 lbs.  
Sling: RSL145



1943 18” Seat Height Hi-Seat Chaise Lounge – Nesting  
L76xW28xH38 • Weight 25 lbs.  
Sling: RSL145

*Available but not shown:*

1923 Chaise Lounge and  
1953 18” Chaise Lounge with Arms

*\*Approved for commercial use*

Designed by Suncoast Furniture

# Maya Strap Aluminum Extrusion



940S Dining – Nesting  
L30xW22xH36 • Weight 16 lbs.



944S 18” Seat Height Chaise Lounge – Nesting  
L76xW28xH38 • Weight 29 lbs.

*\*Approved for commercial use*



# Tables – Knock Down Glass & Acrylic Dining & Gathering Height



3042KD	Dining	(30" x 42" Rectangle - NH only)	
4284RKD	Dining	(42" x 84" Rectangle - NH only)	115 lbs.
3060KD	Dining	(30" x 60" Rectangle - UH only)	60 lbs.
3060KDA	Dining	(30" x 60" Rectangle - UH only)	60 lbs.
3060GKD	Gathering	(30" x 60" Rectangle - UH only)	68 lbs.

3654KD	Dining	(36" x 54" Oval - NH only)	58 lbs.
4276KD	Dining	(42" x 76" Oval - NH only)	91 lbs.
4276GKD	Gathering	(42" x 76" Oval - NH only)	91 lbs.



30KD	Dining	(30" Round - NH only)	32 lbs.
30KDA	Dining	(30" Round - NH only)	34 lbs.
36KD	Dining	(36" Round - NH only)	34 lbs.
36KDA	Dining	(36" Round - UH or NH)	41 lbs.
42KD	Dining	(42" Round - UH or NH)	60 lbs.
42KDA	Dining	(42" Round - NH only)	51 lbs.

48KD	Dining	(48" Round - UH or NH)	59 lbs.
48KDA	Dining	(48" Round - UH or NH)	59 lbs.
36GKD	Gathering	(36" Round - NH only)	48 lbs.
2042KD	Cocktail	(42" Round - NH only)	73 lbs.
42GKD	Gathering	(42" Round - UH or NH)	73 lbs.



# Tables – Knock Down Glass Bar Height



3060BKD Bar Height (30" x 60" Rectangle - UH only) 67 lbs.  
 3060GKD Gathering Height (30" x 60" Rectangle - UH only) 67 lbs.



30BKD Bar Height (36" Round - NH only) 40 lbs.  
 30GKD Gathering (36" Round - NH only) 40 lbs.  
 36GKD Gathering (36" Round - NH only) 47 lbs.  
 42BKD Bar Height (42" Round - UH or NH) 55 lbs.  
 42GKD Gathering (42" Round - UH or NH) 59 lbs.

# Tables – Knock Down Fiberglass



48WF (48" Round - UH only) 92 lbs.



42WF (42" Round - UH only) 80 lbs.

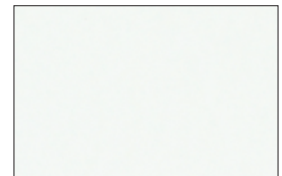


36WF (36" Round - UH only) 69 lbs.  
 30WF (30" Round - NH only) 46 lbs.

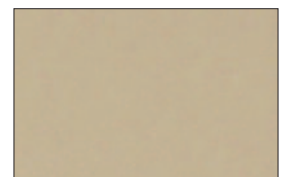


18WF (18" Round - NH only) 22 lbs.

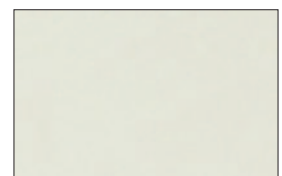
All fiberglass tops are available in these three colors:



White (WH)



Sandstone (SA)



Oyster (OY)



# Side & Occasional Tables • Carts



318G Glass (18" Round-Nesting) 18 lbs.  
318A Acrylic (18" Round-Nesting) 14 lbs.



720G Glass 20 lbs.  
20" Round - Cast Combo



18WG Glass (18" Round)  
18WA Acrylic (18" Round)



31624G Glass 21 lbs.  
16" x 24" Rectangle



32036G Glass 50 lbs.  
20" x 36" Rectangle



362C Glass 40 lbs.  
16" x 24" Service Cart



E460 Two Seat Vectra Slat Bench  
18" x 54"

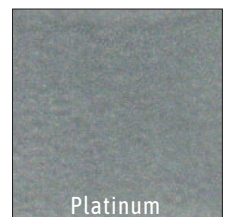


E461 Three Seat Vectra Slat Bench  
18" x 72"

## Four colors to choose from



Ashwood



Platinum



Sequoia



Slate



# Accessorize Your Chaise!



SL010 Chaise Pillow



370 Chaise Slat Tray

## Polymer Slat Tables

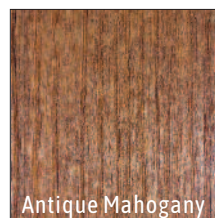


PL4040D 40" Capri Dining Table  
(with or without umbrella hole)



PL2222E 22" Capri End Table

### Six Polymer colors to choose from



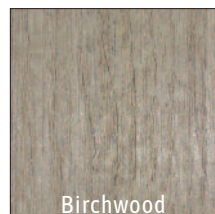
Antique Mahogany



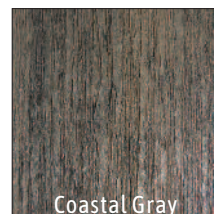
Brazilian Walnut



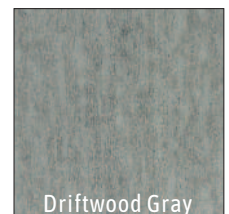
Walnut



Birchwood



Coastal Gray



Driftwood Gray

*Available in various top sizes. Also available in bar height.*



## Basketweave Cast Aluminum Tops



42" x 76" Oval TOPS-1209 70 lbs.  
60" x 60" Square TOPS-1208 60 lbs.

**LIMITED QUANTITY! Call for Availability!**

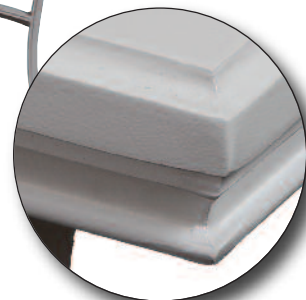
Many table tops 36" round or larger, are available in dining, gathering and bar heights. Order corresponding base to top. See price list for availability, base part number and pricing. (Umbrella Hole Only Except 24" Round and 21" x 42" Rectangle)

## Impressions Aluminum Tables



2244IM 22" x 44" Rectangle Coffee Table  
4276IM 42" x 76" Rectangle Dining  
4284IM 42" x 84" Rectangle Dining

## Slat Table Top



2424SL	Side Table	(20" Square)	23 lbs.
2142SL	Coffee Table	(21" x 42" Rectangle)	23 lbs.
6060SL	Dining	(60" Square x 27"H)	85 lbs.
4276SL	Umbrella Dining	(42" x 76" Rectangle x 27"H)	90 lbs.



# Knock Down Aluminum Tables

KD Aluminum Table Tops are available with umbrella hole only (except for 24" side tables).



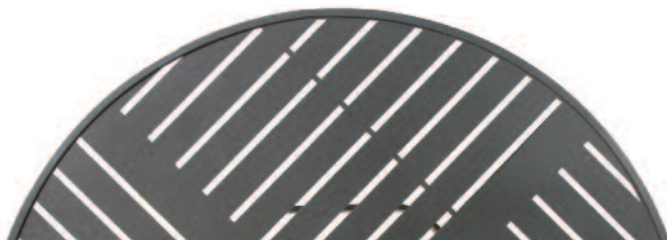
## Square Design

18PA	18" Round Side Table	30PA	30" Round Dining
1818PA	18" Square Side Table	42PA	42" Round Dining
24PA	24" Round Side Table	48PA	48" Round Dining
2424PA	24" Square Side Table	60PA	60" Round Dining
2242PA	22" x 42" Rectangle Table	3030PA	30" Square Dining
2444PA	24" x 44" Rectangle Coffee Table	3636PA	36" Square Dining
		4242PA	42" Square Dining
		4276PA	42" x 76" Oval Dining
		4284RPA	42" x 84" Rectangle Dining
		42GPA	42" Round Gathering
		3636BPA	36" Square Bar Table
		42BPA	42" Round Bar Table



## Verona Design

18VPA	18" Round Side Table
1818VPA	18" Square Side Table
24VPA	24" Round Side Table
2424VPA	24" Square Side Table
2242VPA	22" x 42" Rectangle Table
2444VPA	24" x 44" Rectangle Coffee Table
30VPA	30" Round Dining
42VPA	42" Round Dining
48VPA	48" Round Dining
60VPA	60" Round Dining
3030VPA	30" Square Dining
3636VPA	36" Square Dining
4242VPA	42" Square Dining
4276VPA	42" x 76" Oval Dining
4284RVPA	42" x 84" Rectangle Dining
42GVPA	42" Round Gathering
3636BVPA	36" Square Bar Table
42VPA	42" Round Dining



## Slat Design

18SLPA	18" Round Side Table	60SLPA	60" Round Dining
1818SLPA	18" Square Side Table	3030SLPA	30" Square Dining
24SLPA	24" Round Side Table	3636SLPA	36" Square Dining
2424SLPA	24" Square Side Table	4242SLPA	42" Square Dining
2242SLPA	24" x 42" Rectangle Coffee Table	4276SLPA	42" x 76" Oval Dining
		4284RSLPA	42" x 84" Rectangle Dining
		42GSLPA	42" Round Gathering
30SLPA	30" Round Dining	3636BSLPA	36" Square Bar Table
42SLPA	42" Round Dining	42BSLPA	42" Round Bar Table
48SLPA	48" Round Dining		





# Marine Grade Polymer Tables with Powder Coated Aluminum Base



MS23 23" Side Table  
H21 x W23 x D23 • Weight 22 lbs.



MX2340 23"x40" Coffee Table  
H20 x W23 x D40 • Weight 37 lbs.



MS42-1 42" Square Dining  
H29 x W42 x D42 • Weight 71 lbs.



MR48-1 48" Round Dining  
H29 x W48 x D48 • Weight 74 lbs.



MX4276-1 42"x76" Rectangle Dining  
H29 x W42 x D76 • Weight 106 lbs.



MS42-2 42" Square Counter Dining  
H37 x W42 x D42 • Weight 74 lbs.



MR48-2 48" Round Counter Dining  
H37 x W48 x D48 • Weight 77 lbs.

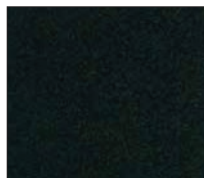


MX4276-2 42"x76" Rectangle Counter Dining  
H37 x W42 x D76 • Weight 112 lbs.

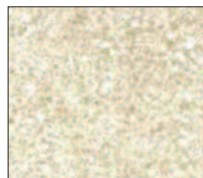
## Table Base Colors



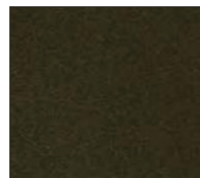
Arctic White (PC01)



Midnight Black (PC02)



Beach (PC03)



Amber Gold (PC04)

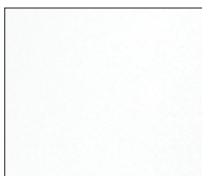


Mahogany (PC05)



Platinum (PC06)

## Table Top Colors



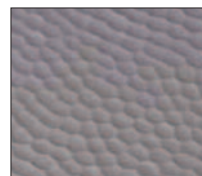
White (M01)



Black (M02)



Brown (M03)



Gunmetal Premium



Bronze Premium  
(M05)



# Umbrellas & Accessories

Check out our complete  
color selection on  
the following pages!



## Commercial Grade Aluminum Pole Umbrella

Umbrellas are available in several fabric colors  
with crank and with pulley and manual lift

Fiberglass Wooden Pole Beach Umbrellas also available  
See price list for details.

## Bases



95 lb. Unfilled Plastic Base  
with Wheels  
Under table bases only.

UMBR 1058 - Black #290  
UMBR 1059 - White #291  
UMBR 1060 - Green #292  
UMBR 1061 - Beige #294  
UMBR 1062 - Bronze #297



755 - Aluminum Cover  
(For base 736-specify color)  
Under table bases only.

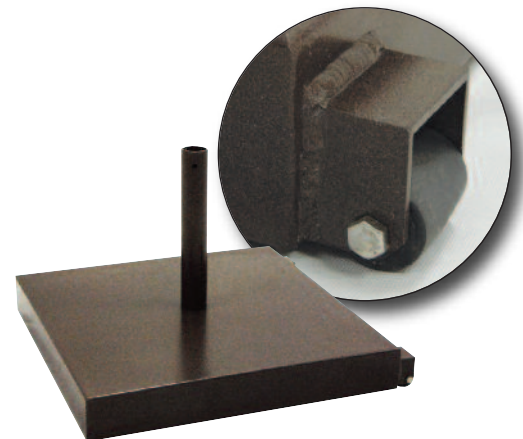


UMBR-1071  
23" Concrete Base  
110 lb Black

Free standing base only.  
Does not go under table.



736 - Unfilled  
White Resin Base  
Under table bases only.



UB102  
Aluminum Base filled with Concrete  
110 lb.

Available with or without wheels  
Available 80 lb. or 100 lb.  
Available in all Suncoast Finishes



# Commercial Umbrella Fabric Colors

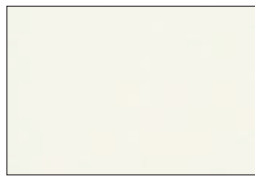
## Price Group A



Erin Green (AU01)



Pacific Blue (AU02)



Natural (AU03)



Hemlock Green (AU04)



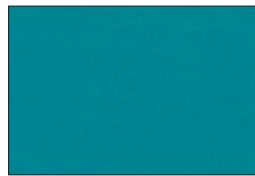
Dubonnet Tweed (AU05)



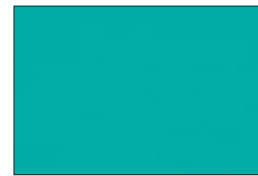
Charcoal Tweed (AU06)



Jet Black (AU07)



Turquoise (AU08)



Aruba (AU09)



Tan (AU10)



Smoke (AU11)



Mocha (AU12)



Royal Blue (AU13)



Walnut Tweed (AU14)



Beige (AU15)



True Brown (AU16)



Terracotta (AU17)



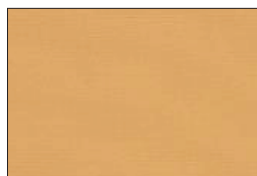
Aquamarine (AU18)



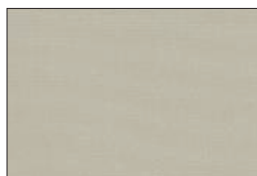
Sky Blue (AU19)



Navy (AU20)



Toast (AU21)



Cadet Grey (AU22)



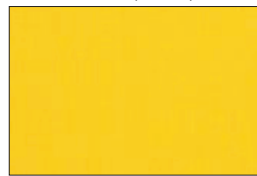
Ivy (AU23)



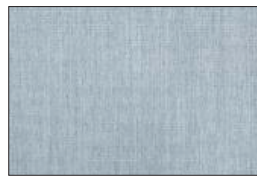
Linen (AU24)



White (AU25)



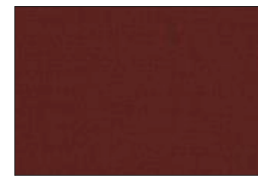
Buttercup (AU26)



Storm (AU27)



Forest Green (AU28)



Black Cherry (AU29)



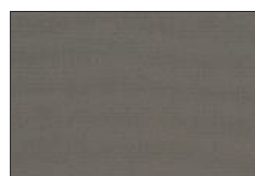
Sapphire Blue (AU30)



Oyster (AU31)



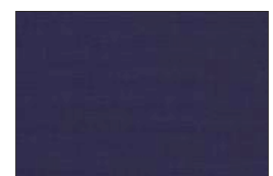
Persian Green (AU32)



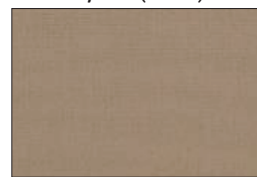
Charcoal Grey (AU33)



Seagrass Green (AU34)



Captain Navy (AU35)



Taupe (AU36)



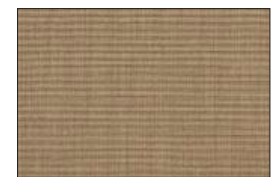
Silver (AU37)



Medit Blue (AU38)



Medit Tweed (AU39)

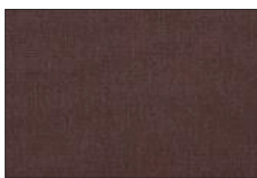


Linen Tweed (AU40)





Tresco Brass (AU41)



Ember (AU42)



Crest Birch (AU42)



Crest Ash (AU44)



Sea (AU45)



Aspen (AU46)



Azure (AU47)



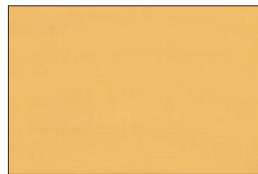
Fern (AU48)



Heather Beige (AU49)



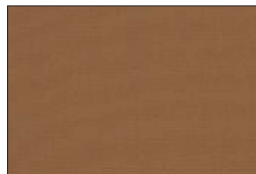
Spa (AU50)



Wheat (AU51)



Capri (AU52)



Cocoa (AU53)



Marine Blue (AU54)



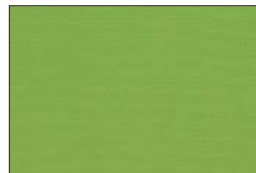
Ocean Blue (AU55)



Parchment (AU56)



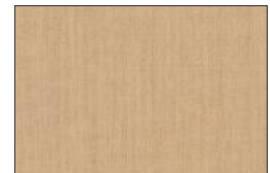
Slate (AU57)



Ginko (AU58)



Basil (AU59)



Tresco Linen (AU60)



Tresco Birch (AU61)

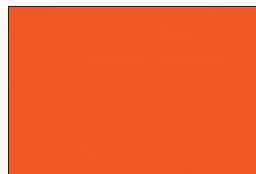
## Price Group B



Sunflower Yellow (BU01)



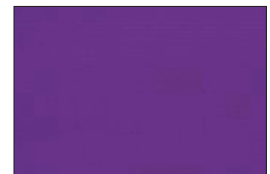
Jockey Red (BU02)



Orange (BU03)



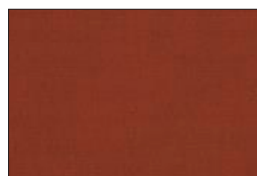
Burgundy (BU04)



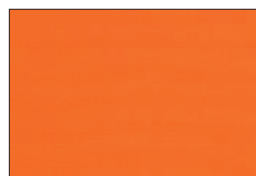
Concord (BU05)



Logo Red (BU06)



Mahogany (BU07)



Tuscan (BU08)



Rust (BU09)



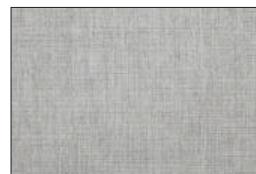
Tresco Clay (BU10)



Tresco Brick (BU11)



Silica Caribbean (BU12)



Silica Gravel (BU13)



Silica Barley (BU14)



Silica Dune (BU15)



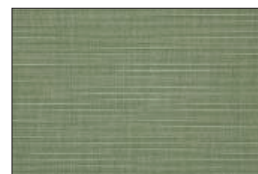
Silica Sesame (BU16)



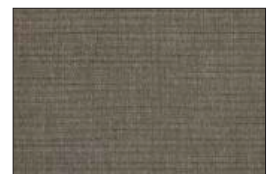
Silica Stone (BU17)



Silica Silver (BU18)



Silica Sage (BU19)



Silica Charcoal (BU20)





Shown in: Finish Camel



Shown in: Finish Camel



# Kona Wicker

When ordering, use Cushion # (below each item) / Fabric #  
Available in White and Camel Wicker colors • Weights include cushion.



123-00 Dining Chair  
Cushion #KN01/Fab #  
L26xW29xH34  
Weight 3 lbs.



123-16 Swivel Tilt Chair  
Cushion #KN02/Fab #  
L26xW24xH34  
Weight 6 lbs.



123-02 Cafe Chair  
Cushion #KN09/Fab #  
L26xW23xH33  
Weight 2 lbs.



123-12 Leisure Chair  
Cushion #KN17/Fab #  
L27xW29xH32  
Weight 5 lbs.



123-19 Loveseat  
Cushion #KN21/Fab #  
L27xW48xH32 • Weight 10 lbs.



123-10 Sofa  
Cushion #KN13/Fab #  
L27xW69xH32 • Weight 15 lbs.



123-04 Ottoman  
Cushion #KN25/Fab #  
L25xW20xH15  
Weight 2 lbs.



123-T2754 27" x 54" Rectangular Table  
L54xW27xH28 • Weight 40 lbs.



123-T2040 20" x 40" Coffee Table  
L40xW20xH20 • Weight 25 lbs.



123-T2222 End Table  
L22xW22xH22 • Weight 15 lbs.



123-T30 30" Round Cafe Table  
L30xH28 • Weight 22 lbs.



123-T36 36" Round Dining Table  
L36xH28 • Weight 25 lbs.



# Accent Pillows

Please specify Fringe (F),  
Welt (W) or Cord (C) option



18" Square Pillow  
HW218F, HW218W or HW218C



7" x 14" Pillow  
ME210F, ME210W or ME210C



16" x 7" Bolster Pillow  
#ME211F or ME211C



16" Square Pillow  
HW200 or HW200C



16" x 24" Pillow  
ME215F, ME215W or ME215C

# Fringe



FR-100 - Pampas Fringe



FR-103 - Regency Fringe



FR-106 - Stone Linen Fringe



FR-101 - Autumn Fringe



FR-104 - Fiesta Fringe



FR-108 - Captains Navy Fringe



FR-110 - Avocado Fringe



FR-102 - Stardust Fringe



FR-105 - Silverado Fringe



FR-109 - Tan Fringe

# Cording



CD-100 - Brass Cord



CD-104 - Pablo Cord



CD-108 - Captains Navy Cord



CD-101 - Spice Cord



CD-105 - Black Cord



CD-109 - Tan Cord



CD-103 - Birch Cord



CD-106 - Aqua Cord



CD-110 - Avocado Cord

Available but not shown  
CD-107 - Petal Cord



# Standard Frame Colors

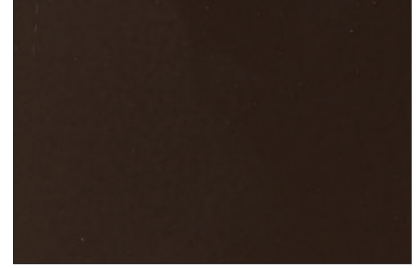
Suncoast frames are prepared using our exclusive multi stage Platinum Bond™ finishing process. Platinum Bond™ incorporates state of the art equipment and techniques with powder coat finishes. The process begins with hand sanding and inspection of each frame which then enters our automated multi stage pretreatment system. The proprietary chemicals in this system etch the aluminum, providing a corrosion resistant chemical bond between the frame and the finish. After each frame is coated with Platinum Bond™ powder coating, your furniture will travel along our automated high tech finishing conveyor line and through our specially constructed curing ovens where the powder is mechanically fused, and bonded to the aluminum frame yielding a thick, rock hard finish tailored for outdoor use. Suncoast warranties our Platinum Bond™ finish for 3 years.



Arctic White (AW)



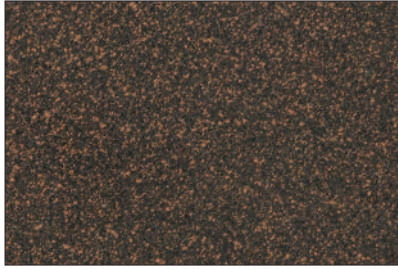
Amber Gold (AG)



Espresso (ES)



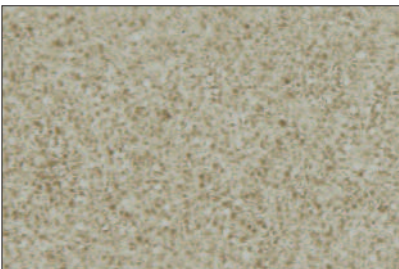
Ebony (EB) textured black



Mahogany (MH)



Sahara (SH)



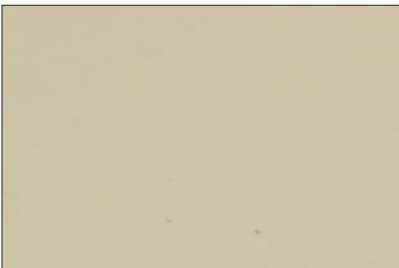
Beach (BE)



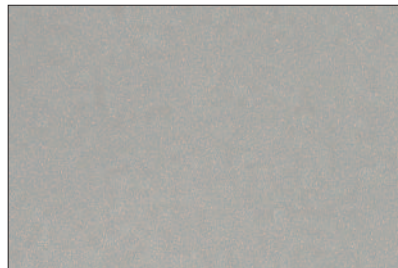
Nickel (NI)



Cabernet (CA)



Sandalwood (SD)



Platinum (PL)



Aqua Splash (AQ)



# Strap Colors

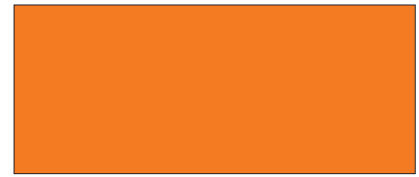
All Suncoast strapping is 2 inches wide, 1/8 inch thick, and 100% virgin vinyl. This virgin vinyl is specially formulated to remain colorfast and mildew resistant in the most severe climates for many years.



Burgundy (BUR)



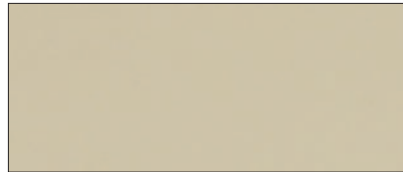
Terracotta (TER)



Orange (ORA)



White (WHI)



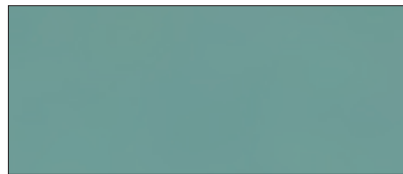
Sandalwood (SDW)



Beach (PEB)



Clover (CLO)



Aqua Splash (AQ)



Seafoam (SEA)



Turquoise (TUR)



French Blue (FRE)



Slate Blue (SLA)



Holly (HOL)



Teal (TEA)



Royal Blue (ROY)



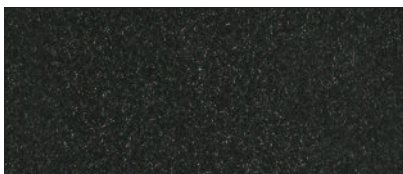
Navy (NAV)



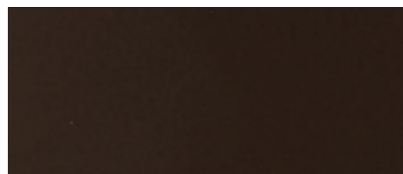
Grey (GRE)



Adobe (ADO)



Ebony (EBO)



Sunrise (SUN)



Ash Grey (ASH)

*Also available but not shown:*

Cream (MO2) / Driftwood (MO5) / Camel (MO6) / Brown (MO8) / Kelly Green (M11) / Forest Green (M12) / Off White (M24) / Red (M25)  
Bronze (M31) / Putty (M37) / Sherwood (48) / Dark Teal (M49) / Dark Grey (M50) / Dark Green (M51) / Moss Green (M326)





# Suncoast Furniture – Commercial Quality

## Why We Are Better

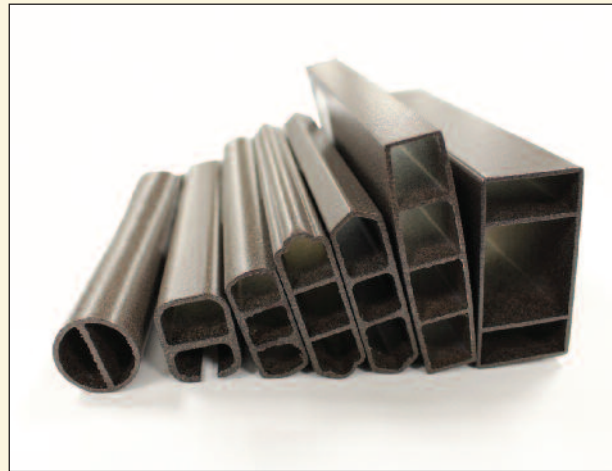
- We understand your needs: Expert Advice. Complete Solutions. Service After The Sale.
- We understand your client's furniture needs: Durable. Attractive. Affordable
- Suncoast's furniture is handcrafted in Fort Myers, Florida. We combine the finest materials, the latest manufacturing techniques, and skilled craftsmanship to provide you the best value for outdoor furniture.

## Longer Service Life and Lower Cost of Ownership

Our all-aluminum frames are built to last. Unlike many manufacturers, we use heavy gauge extrusions with internal strengthening ribs in proprietary configurations to provide increased strength. These allow us greater flexibility in creating durable and attractive designs. Aluminum is a material that is light weight, strong, and highly corrosion resistant. It is 1/3 the weight of steel and wrought iron and won't rust.

## Powder Coated Finish That Looks New For Years

Our aluminum furniture frames are prepared using our exclusive multi-step **Platinum Bond™** powder coating process. The entire process is environmentally friendly with no heavy metals in the waste stream. Frames are hand and machine sanded to remove surface imperfections in the metal.



### Conveyorized Metal Pretreatment

After sanding, the furniture is placed onto an automated conveyor to pass through a four-stage chemical spray wash system.

**Stage 1 – Surfactants and acid cleaners** in the first stage remove oil and dust and etch the surface to increase the surface area to the substrate. This provides a tight bond between the aluminum and powder coating.

**Stage 2 –** The second stage is a **fresh water rinse** to remove the surfactants and acid from the previous stage.

**Stage 3 –** The third stage is another rinse; this time with **reverse osmosis water**. This water leaves the surface free of all impurities. Suncoast is unique in the industry for utilizing a rinse with such purity.

**Stage 4 –** The fourth stage applies a **zirconium polymer sealant and corrosion prevention coating** to the surface. This dry in place coating promotes adhesion and offers superior salt spray corrosion resistance when compared to phosphate-based coatings.



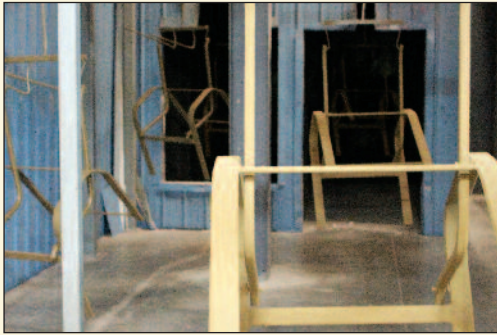


### Drying Oven

The conveyor moves the furniture through a convection oven where streams of hot air thoroughly dry the **zirconium polymer sealant** onto the surface of the furniture.

### Powder Coating

After the furniture is dry, it passes through our powder coating booth. Two coats of **TGIC polyester powder** are applied using electrostatic spray guns. Powder coating is three times thicker than paint and more durable.



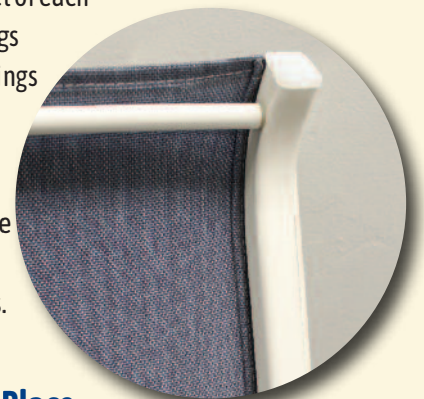
### Curing Oven

The furniture passes through an elevated cure oven that operates at a temperature of 380 degrees Fahrenheit. It is here that the magic of powder coating takes place. It changes from a dry powder to the desired glossy smooth or textured finish. The color also changes dramatically; we see the multi-color finishes appear. The powder melts and flows into the etched surface created in the pretreatment washer. After curing, the powder is now permanently **bonded to the aluminum**.

### Attractive and Durable Slings

Double stitched slings lock together the outer vinyl jacket of each fabric strand and lock the inner acrylic core, making slings longer lasting. Suncoast slings are among the tightest slings in the industry. This keeps your slings **taut and sag-free** for many years.

Our custom sewing guides allow our operators to produce slings of constant width and tailored seams. Unlike our competitors, you won't find raw edges on our sling seams.



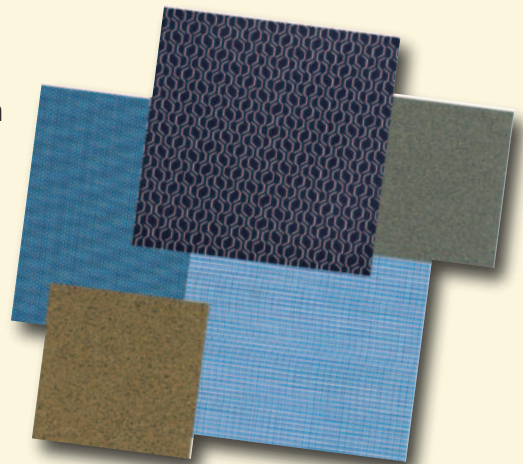
### Double Wrapped Vinyl Straps Stay Locked in Place

Suncoast uses 2" wide x 1/8" thick, 100% virgin vinyl straps with integrated ultraviolet stabilizers and mildew inhibitors, allowing for longer lasting colors and greater mildew resistance. Vinyl straps are **double wrapped** and held in place by solid nylon rivets. This extra wrap protects the rivet and keeps it firmly in place. Note that all Suncoast straps are California Proposition 65 safe.

### Customized Frame Finishes and Fabrics

A wide range of colors and fabrics allow you to *customize your furniture*, to complement your decor. We use only outdoor duty fabrics made in the USA from synthetic materials. Vinyl coated polyester fabrics made by **Phifer** and **Twitchell** are used for our slings. Both companies have decades of experience making high performance sling fabrics.

We use **Sunbrella** fabrics for cushions and slings. Sunbrella builds on their heritage of high-performance solution dyed acrylic fibers to offer consumers an unmatched palette of fabrics. Whatever your needs, we have frame finishes and fabrics that fit them.







### Welded Riv-Nuts Outlast Other Fasteners

Suncoast's sling furniture uses rivet nut attachments that are made from **solid aluminum** and welded into the furniture frame. These are much stronger than the thin steel or aluminum rivet nuts used by our competitors.

### Easily Replaceable Stainless Steel Hardware

We use only stainless-steel bolts, screws, and nylon locknuts in our furniture. Stainless steel will not rust or become wobbly like the aluminum fasteners used by other companies. **Replacement fasteners are readily available** from Suncoast or your local hardware supplier.



### Unbreakable Welds

Our **inverter based TIG equipment** allows our welding staff to precisely control the weld pattern and profile. Argon gas shields the weld pool during the welding process. This creates welds whose strength is unmatched, ensuring years of carefree enjoyment.

### All Weather Cushions

Suncoast cushions are uniquely designed for each collection. However, all cushions share Suncoast's water-resistant construction utilizing SMS fabric. We use a combination of varying densities of polyurethane foam and polyester fiber wrap to fill seat cushions. Foam provides years of durability and seating comfort. To prevent water intrusion into the stuffing materials, we cover the stuffing with a sewn jacket of SMS fabric. Spunbond / Meltblown / Spunbond polypropylene fabric allows air to pass through but stops water penetration, keeping the stuffing materials dry. **The direct benefit is that cushions can be left on the furniture in the rain.** Simply wipe the surface of the cushions with a dry towel, and the cushions are ready for immediate use. SMS fabrics also protect the stuffing materials in cushion backs and pillows.





## Individual Comfort and Style

Six seating models: Cast, cushion, sling, vinyl strap, basket weave vinyl strap, and resin wicker, all designed to provide comfort, and to match the décor of every property. We now offer **fully upholstered outdoor furniture** with our Summer and Vectra Breeze collections. Our styles arrange from the most modern to traditional, with plenty of transitional styles in between. Mix and match our collections for dining, lounge, bar, gathering, and beachside use.



**Cast**



**Cushion**



**Sling**



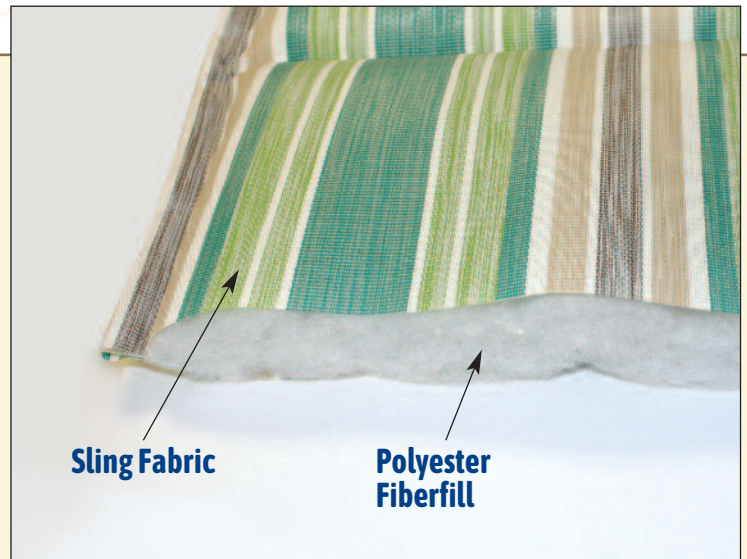
**Strap**



**Upholstered**

### Comfortable and Stylish Padded Slings

Padded slings offer two benefits – the ability to choose a **softer fabric for the front face** of the padded sling and the extra comfort of internal padding. Our padded slings are built upon the strength of our double sewn slings. A layer of polyester fiberfill is sewn between the base sling fabric and your selected top fabric. The result is both attractive and comfortable.



### Comfortable Seating Built into Every Frame

Our designs feature a gentle curve in each chair back, **ergonomically designed to provide lumbar and shoulder support** for comfortable seating. Our lumbar support is lower and deeper than our competitors, providing hours of seating comfort.







## Capability Statement

Suncoast Furniture has been manufacturing commercial and residential outdoor furniture since 1983 in its state of art 60,000 square foot factory in Fort Myers, Florida. Suncoast manufactures outdoor furniture for many needs—poolside, patio, beach, and restaurant. Styling ranges from traditional to contemporary.

Reasons why you should consider Suncoast:

- Commercial duty furniture made in USA
- MFC pricing available for government purchasers
- Wide variety of furniture—vinyl strap, sling, padded sling, cushion, resin wicker, cast
- Custom configuration of frame color, strap, and fabric
- Powder coated welded aluminum frames on all products
- Quality US manufactured fabrics -Glen Raven Sunbrella, Phifertex, Textilene
- California Prop 65 safe fabrics and vinyl straps standard on all products

DUNS: 101868255

CAGE CODE: 0W2N9

NAICS CODES: 337122, 337124, 337127

