

WE ARE

**INSPIRED
COLORFUL
VIBRANT**

PAVILION[®]

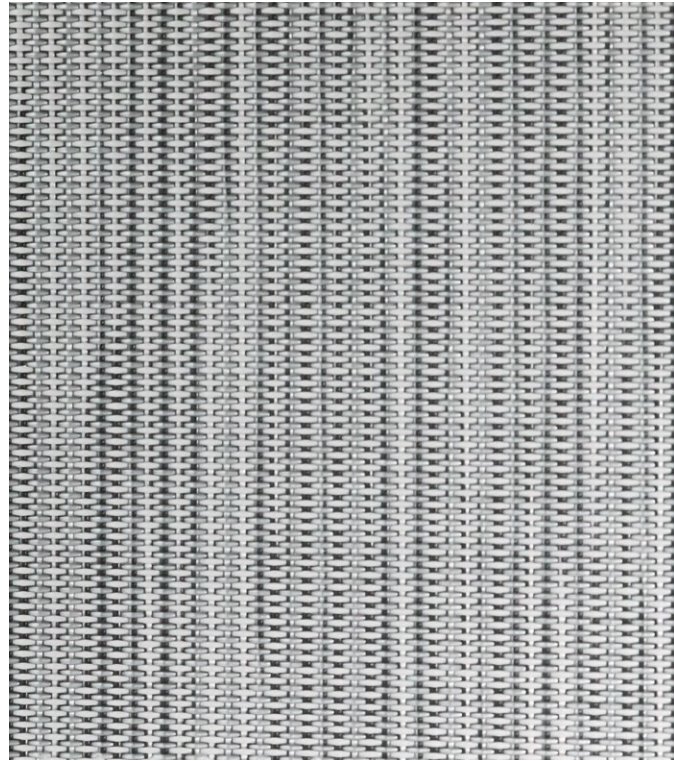
SLINGS

SEIDEN & CO.
HOTEL SUPPLIERS **▶**

2865 SW 69th Court, Miami, FL 33155. Tel: 305-438-9997
www.seidencompany.com



SLINGS



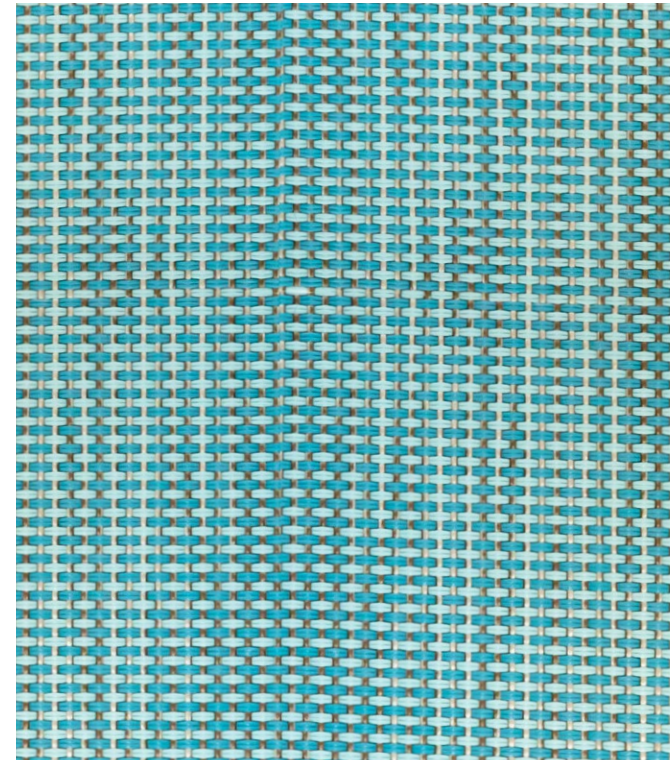
Nickel



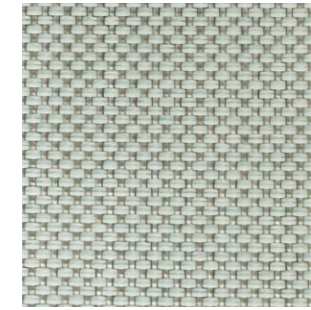
Icicle



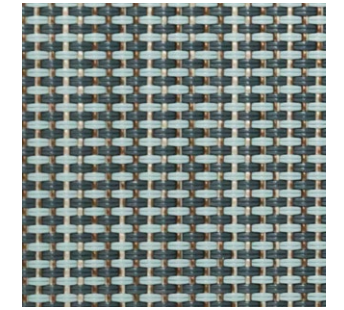
White



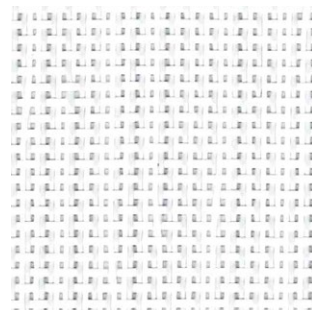
Capri



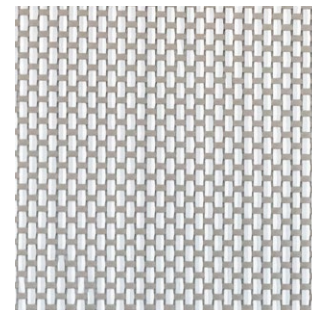
Shore



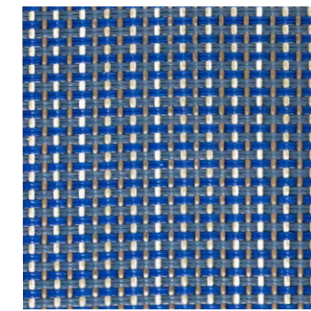
Sea Breeze



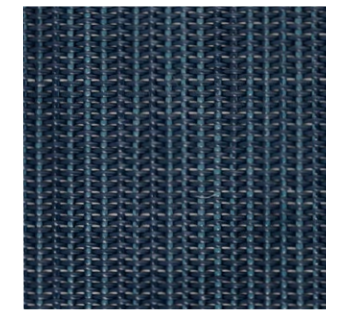
Cloud



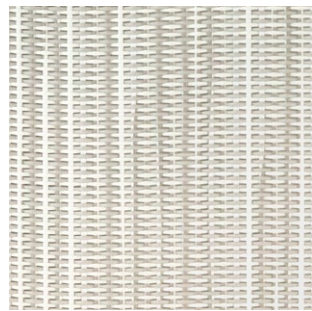
Sterling



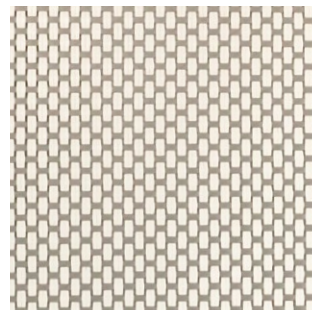
Indigo Haze



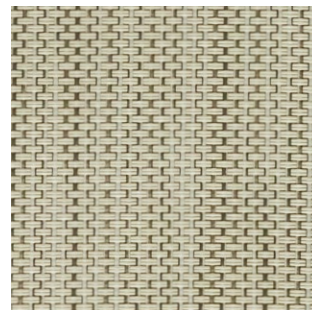
Nightfall Blue



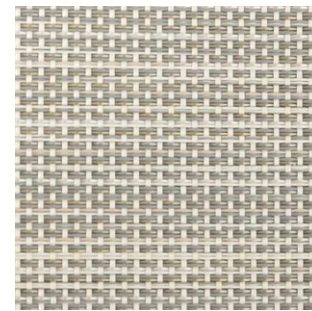
Sea Salt



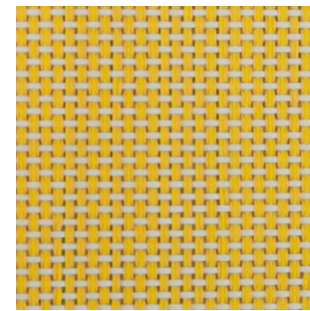
Latte



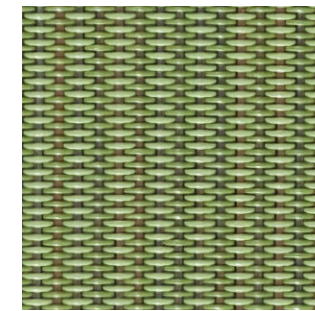
Sandstone



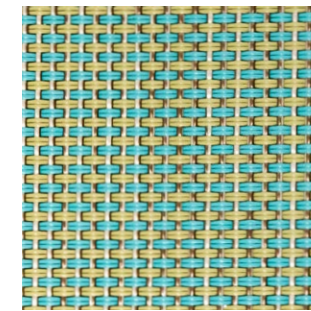
Driftwood



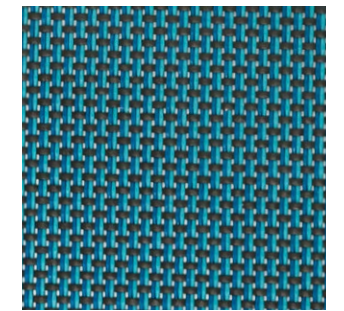
Citronelle



Seaweed



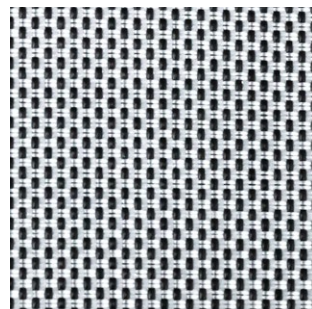
Lagoon



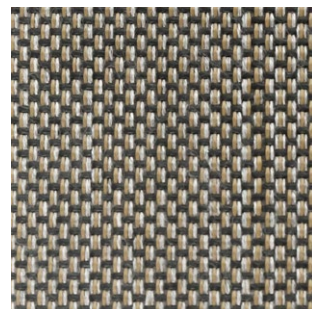
Niagara



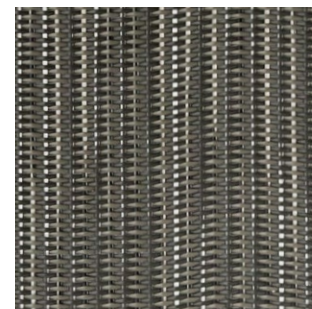
Oyster



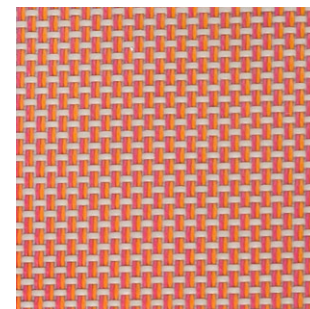
Titanium



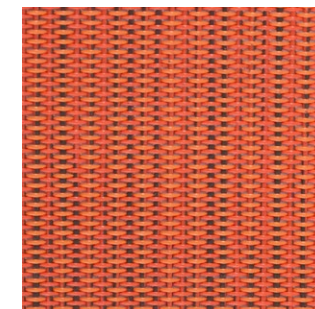
Fossil



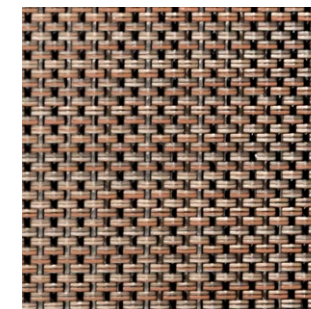
Obsidian



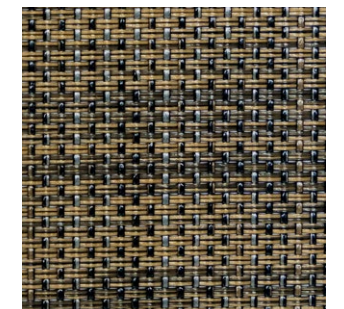
Poppy



Pimiento



Coppertone



Mesquite

SLING FABRICS

Pavilion has partnered with industry leaders in textile technology to provide sling fabrics with superior performance across all categories including colorfastness, tensile strength, and abrasion resistance. Our sling fabrics also stay cool, dry quickly and resist mold.

TECHNICAL SPECIFICATIONS

- Meet and exceed American and European testing standards† for:
 - Abrasion
 - Elongation
 - Flammability
 - Colorfastness
 - Mold resistance
 - Weather resistance
- Incorporate antimicrobial technology
- Withstand an intensive testing protocol on Pavilion frames to ensure structural integrity
- Provide a warranty for one year on fabric and three years on workmanship; visit pavilionfurniture.com for full Pavilion Limited Lifetime Warranty details
- Achieved UL GREENGUARD® certification

† For detailed testing information, please contact customer service.

ANTIMICROBIAL TECHNOLOGY

A built-in, active ingredient enables our slings to resist the growth of microbes such as bacteria, mold and mildew that can cause stains, odors and product deterioration. This protection keeps the sling cleaner and fresher between cleanings and helps it last longer. It won't wash off or wear away for the lifetime of the sling.

WIDTH AND WEIGHT SPECIFICATIONS

COLOR	WIDTH	WEIGHT PER SQ YD
Capri	54"	15.8 oz
Citronelle	70.9"	13.3 oz
Cloud	70.9"	16.5 oz
Coppertone	54"	15.8 oz
Driftwood	54"	15.8 oz
Fossil	70.9"	13.3 oz
Indigo Haze	54"	16.5 oz
Lagoon	54"	15.9 oz
Latte	70.9"	16.5 oz
Mesquite	54"	15.8 oz
Niagara	70.9"	16.5 oz
Nickel	54"	15.9 oz
Seaweed	54"	15.9 oz

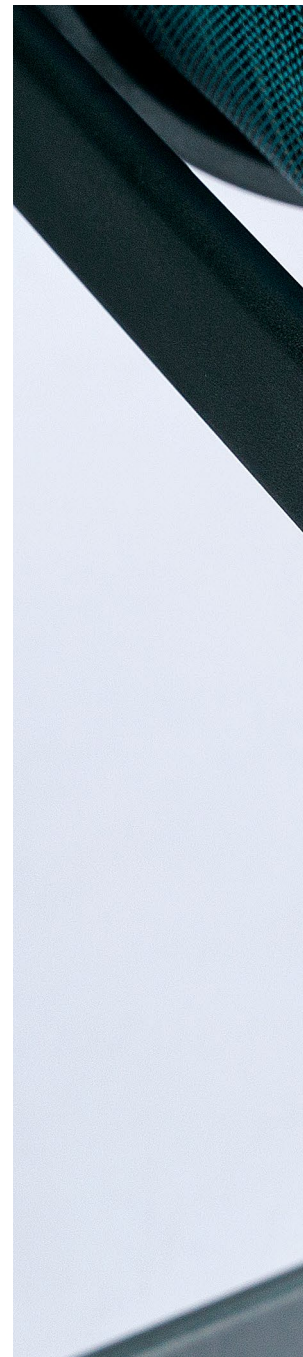
COLOR	WIDTH	WEIGHT PER SQ YD
Nightfall Blue	54"	15.9 oz
Obsidian	54"	15.9 oz
Oyster	54"	12.9 oz
Pimiento	54"	16.5 oz
Poppy	70.9"	16.5 oz
Sea Breeze	54"	15.8 oz
Sea Salt	54"	16.5 oz
Shore	54"	12.9 oz
Sterling	70.9"	16.5 oz
Titanium	54"	15.0 oz
White	54"	16.5 oz
Icicle	54"	16.5 oz
Sandstone	54"	16.5 oz

CARE AND MAINTENANCE

Vacuum or brush sling fabric to remove dirt. Rinse frequently with clean water and air dry, preferably in plenty of sun. For deeper cleaning, use a solution of 1 tbsp. liquid dish soap and 3 tbsp. bleach mixed in 1 gallon of water. Clean fabric using a sponge or soft brush dipped in the solution. Rinse with clean water and air dry. Do not use a pressure washer. Replacement slings are available.

For full care instructions, visit pavilionfurniture.com.

For further assistance, please contact your sales representative or Pavilion customer service at 305.823.3480 or info@pavilionfurniture.com.



WE ARE
**MIAMI
NATIVES
OUTDOOR
LOVERS**
PAVILION



FEATURED COLLECTIONS



NEW & FEATURED COLLECTIONS

PAVILION®

THE SOCIAL MAGNETISM OF MIAMI BEACH,
THE GREEN REFUGE OF COCONUT GROVE,
AND THE REFLECTIVE NATURE OF THE EVERGLADES
HAS TAUGHT US THAT NOT ALL OUTDOOR SPACES
ARE CREATED EQUAL.

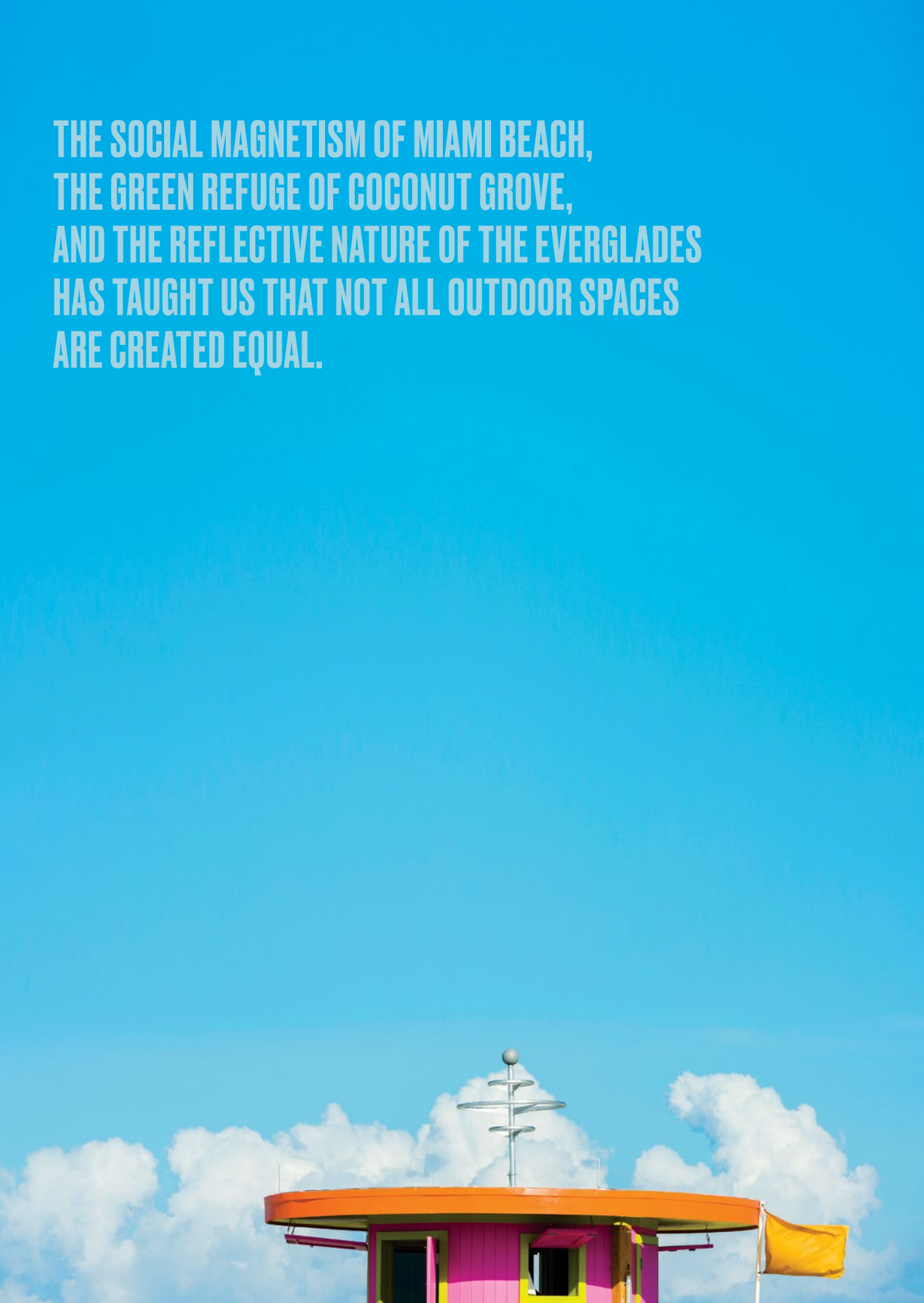
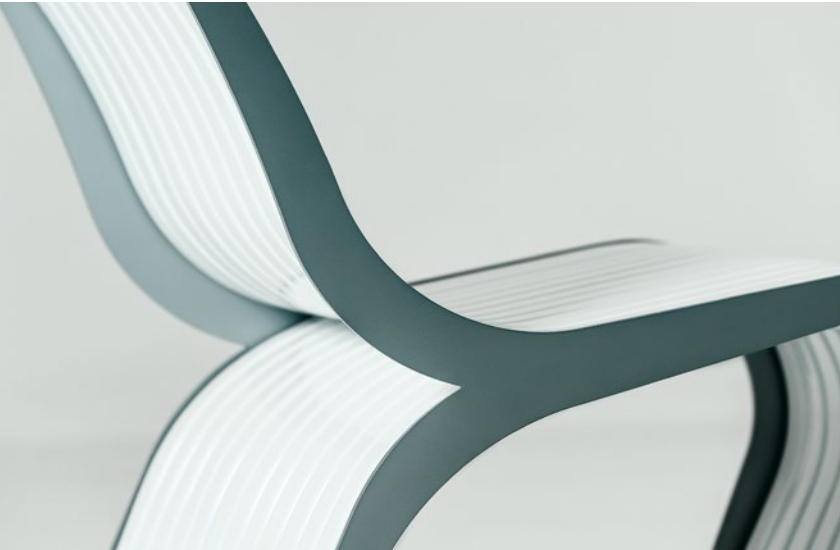
MARINA



CARLYLE



TIDES



MARINA

Created with the world-renowned Miami Beach lifestyle in mind, Marina pays homage to the storied history of this legendary city and its many nostalgic beachfront resorts and hotels in South Beach and along Collins Avenue.

Marina presents a contemporized interpretation of nostalgic retro classic indoor/outdoor furniture updated with an innovative use of durable weather-resistant materials in trending yet timeless color ways.



RICHARD FRINIER

A native Californian, Richard Frinier is passionate about designing for the casual furnishings industry with an emphasis on residential, contract, hospitality and resort environments.

Best known for his award-winning furniture and textile designs that bring the quality of living indoors outside and the casual spirit of the outdoors inside, his passion and dedication have led him to receive over 90 design excellence awards and his career has been recognized with a Lifetime Achievement Award from the International Casual Furnishings Association, induction into the American Home Furnishings Hall of Fame, and he has been named among the Top 40 Influencers in the Home Industries over the past 40 years.







MARINA



DINING ARM CHAIR
 MN 2030Y FlexStrap and Yacht Cord on Armrest
 MN 2030D FlexStrap and Deckor Cap Rails on Armrest
 W 24" D 27" H 31.5" SH 18" AH 25"



LOUNGE CHAIR
 MN 2100LY FlexStrap and Yacht Cord on Armrest
 MN 2100LD FlexStrap and Deckor Cap Rails on Armrest
 W 27" D 35" H 33" SH 18" AH 25"



LOUNGE CHAIR (Aluminum Back)
 MN2 2100LY FlexStrap, Aluminum Back, Yacht Cord on Armrest
 MN2 2100LD FlexStrap Seat, Aluminum Back, Deckor Cap Rails on Armrest
 W 27" D 35" H 33" SH 18" AH 25"



CENTER SECTION
 MN 2160L FlexStrap Seat, Aluminum Back
 W 35" D 35" H 34" SH 18"



LEFT ARM SECTION
 MN 2140LL FlexStrap Seat, Aluminum Back
 W 69" D 35" H 34" SH 18" AH 34"



RIGHT ARM SECTION
 MN 2150LR FlexStrap Seat, Aluminum Back
 W 69" D 35" H 34" SH 18" AH 34"



DOUBLE CENTER SECTION
 MN 2170L FlexStrap Seat, Aluminum Back
 W 70" D 35" H 34" SH 18"



CHAISE LOUNGE (Stackable)
 MN 2890L with FlexStrap Seat and Back
 W 35.5" L 78" H 34" SH 15"



SIDE TABLE
 MN 1820-18
 Ø 20.25" H 18"



SIDE TABLE
 MN 2626-23
 W 26" D 26" H 23"



COFFEE TABLE
 MN 3131-14
 W 31" D 31" H 13.5"



COFFEE TABLE
 MN 3568-14
 W 35" D 68" H 13.5"



COFFEE TABLE
 MN 3838-14
 W 38" D 38" H 13.5"

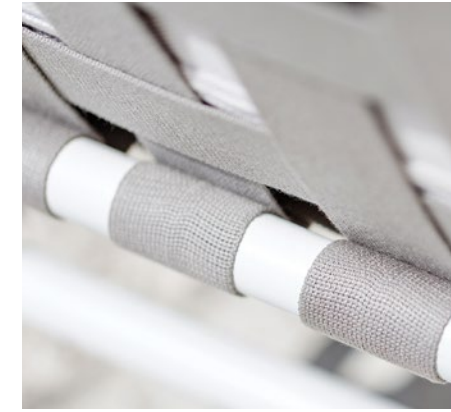
MARINA SECTIONAL CONFIGURATIONS

		DESCRIPTION
A		<ul style="list-style-type: none"> 1 MN 2140LL Left Arm Section 2 MN 2150LR Right Arm Section 4 MN 2160L Center Section (2) <p>TABLES</p> <ul style="list-style-type: none"> A MN 3131-14 Coffee Table (3)
B		<ul style="list-style-type: none"> 1 MN 2140LL Left Arm Section (2) 2 MN 2150LR Right Arm Section 4 MN 2160L Center Section <p>TABLE</p> <ul style="list-style-type: none"> C MN 3568-14 Coffee Table
C		<ul style="list-style-type: none"> 1 MN 2140LL Left Arm Section 2 MN 2150LR Right Arm Section 3 MN 2170L Double Center Section 4 MN 2160L Center Section (2) <p>TABLES</p> <ul style="list-style-type: none"> A MN 3131-14 Coffee Table (2) B MN 3838-14 Coffee Table
D		<ul style="list-style-type: none"> 1 MN 2140LL Left Arm Section 2 MN 2150LR Right Arm Section 3 MN 2170L Double Center Section <p>TABLES</p> <ul style="list-style-type: none"> A MN 3131-14 Coffee Table B MN 3838-14 Coffee Table (2)
E		<ul style="list-style-type: none"> 3 MN 2170L Double Center Section 4 MN 2160L Center Section <p>TABLES</p> <ul style="list-style-type: none"> A MN 3131-14 Coffee Table D MN 1820-18 Side Table

MARINA MATERIAL OPTIONS

FlexStrap

Pavilion's FlexStrap is engineered for durability and comfort, and designed with a rich woven effect made with reinforced Sunbrella® yarns elevating the overall appearance and performance of interwoven strap seating surfaces for indoor/outdoor furniture. The two-inch width strap is interwoven by hand and secured over a powder-coated aluminum framework creating a unique seating surface, while providing good stretch and recovery for comfort returning to a taut resistance when not in use.



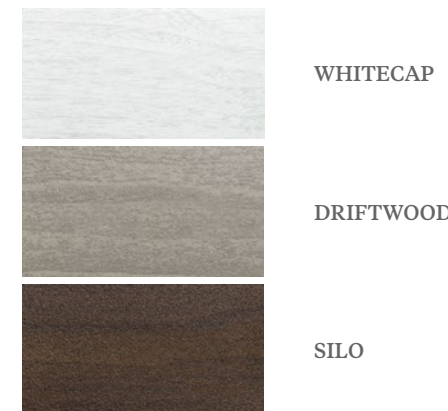
Yacht Cord

Pavilion's Yacht Cord is a weather-resistant braided cord added for visual interest with a soft hand and comfortable surface to rest the arm. Made of Sunbrella® performance yarns in a 5mm diameter Birdseye pattern, Yacht Cord is available in complementary colors to FlexStrap, and is one of two creative and clever cap rail accents designed to be in keeping with the Miami-made theme of outdoor living and lifestyles. Yacht Cord is mold, mildew, stain, UV and weather resistant.



Deckor

Pavilion's Deckor aluminum cap rail accent is a proprietary and patented decorative design detail with a wood-grain texture inspired by nautical architecture in the colors of Whitecap, Driftwood and Silo.





CARLYLE

Sleek and elegant define Carlyle from its seat and back to the graceful pedestal table. Carlyle features a functional stacking frame with a variety of seating options.



JOHN CALDWELL

Caldwell has designed outdoor furniture, office furniture and accessories, umbrellas, lighting, and ceiling fans for the United States and world markets. He also has taught and lectured on design for 20 years at various California colleges, including Long Beach State, Pasadena City College and the Art Center College of Design.

He has always been interested in using the latest light-weight, durable, and easy to clean materials for his outdoor lines with aluminum being his favorite material for practicality and design.





STACKING DINING ARM CHAIR
CY 7130 Regular Sling
CY 8130 Comfort Cushion Sling
W 26" D 28.5" H 34" SH 18" AH 24.5"



STACKING LOUNGE CHAIR
CY 7100 Regular Sling
CY 8100 Comfort Cushion Sling
W 28" D 29.5" H 31.5" SH 16" AH 22.5"



STACKING OTTOMAN
CY 7010 Regular Sling
CY 8010 Comfort Cushion Sling
W 22.5" D 20.5" SH 15"



COUNTER STOOL WITH ARMS
CY 7045-24 Regular Sling
CY 8045-24 Comfort Cushion Sling
W 26" D 28" H 40.5" SH 24" AH 30.5"



STACKING DINING ARM CHAIR
CYE 9130 Ecowood
W 26" D 28.5" H 34" SH 18" AH 24.5"



STACKING LOUNGE CHAIR
CYE 9100 Ecowood
W 28" D 29.5" H 34.5" SH 16" AH 22.5"



STACKING OTTOMAN
CYE 9010 Ecowood
W 22.5" D 21.5" SH 15"



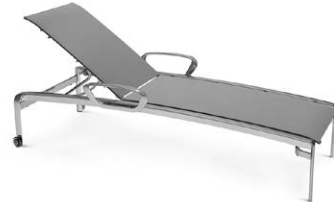
COUNTER STOOL WITH ARMS
CYE 9045-24 Ecowood
W 26" D 28" H 40.5" SH 24" AH 30.5"



BAR CHAIR WITH ARMS
CY 7045-30 Regular Sling
CY 8045-30 Comfort Cushion Sling
W 26" D 28" H 46.5" SH 30" AH 36.5"



STACKING CHAISE LOUNGE
CY 7190 Regular Sling
CY 8190 Comfort Cushion Sling
W 30" L 83" SH 18"



STACKING CHAISE LOUNGE WITH ARMS
CY 7191 Regular Sling
CY 8191 Comfort Cushion Sling
W 36" L 83" SH 18" AH 23"



STACKING SIDE TABLE
CY 1821
Ø 21.5" H 15"
Available with various tops



BAR CHAIR WITH ARMS
CYE 9045-30 Ecowood
W 26" D 28" H 46.5" SH 30" AH 36.5"



STACKING SIDE TABLE
CY 1821E Ecowood
Ø 18.5", H 18"



DINING TABLE
CY 1000 Series Ecowood
Available sizes
Ø 39.5", Ø 45.5" H 29"



DINING TABLE
CY 1000 Series Ecowood
Available sizes
39" sq., 45.5" sq. H 29"



STACKING SIDE TABLE
CY 2222
W 22" D 22" H 16.5"
Available with various tops



DINING TABLE
CY 1000 Series
Available sizes
Ø 39.5", Ø 45.5" H 29"
Available with various tops



DINING TABLE
CY 1000 Series
Available sizes
39.5" sq., 45.5" sq. H 29"
Available with various tops



UMBRELLA TABLE
CY 2000 Series
Available sizes
Ø 39.5", Ø 45.5" H 29"
Available with various tops



UMBRELLA TABLE
CY 2000 Series Ecowood
Available sizes
Ø 39.5", Ø 45.5" H 29"



UMBRELLA TABLE
CY 2000 Series Ecowood
Available sizes
39.5" sq., 45.5" sq. H 29"



BAR TABLE
CY 3000 Series Ecowood
Ø 39.5", H 42"
Available with various tops



BAR TABLE
CY 3000 Series Ecowood
39.5" sq. H 42"
Available with various tops



UMBRELLA TABLE
CY 2000 Series
Available sizes
39.5" sq., 45.5" sq. H 29"
Available with various tops



BAR TABLE
CY 3000 Series
Ø 39" H 42"
Available with various tops



BAR TABLE
CY 3000 Series
39" sq. H 42"
Available with various tops

TIDES

The Tides Collection is form and function brought to the outdoors. Inspired by the beauty of the ocean's movement, the curvilinear lines and shapes of the chair convey the fluidity of the tides. The curved elements of the chair are spaced evenly and repeatedly throughout the piece evoking motion. Narrow extrusions closely aligned and gently bending to support the human form exude ergonomic comfort.

The collection is constructed with an inner and outer frame that allows the chair, ottoman and tables to be specified with contrasting colors. Sunlight passes through the slats, creating intriguing shadows as the sun moves across the sky.

The Tides Collection evokes nature's movements and our effort to bend it to our will with unique design.



PETU KUMMALA

Pavilion recently partnered with Miami Beach designer Petu Kummala and is thrilled to announce the launch of the Tides Collection. Petu's love for design began as a child in Finland.

He has always been driven to design and customize objects, and to bring life to art and everyday functional items. Today, Kummala holds the prestigious role of senior director of interior design & architecture at Carnival Cruise Lines and maintains his design studio, 358 Design where he explores his imagination and focus on form and function.







TIDES



LOUNGE CHAIR
CY 7130
W 25" D 31" H 30" SH 14"



OTTOMAN
TD 2110
W 21" D 23" H 13"



SIDE TABLE
TD 1822-14ALS
W 19" D 22" SH 14"



COFFEE TABLE
TD 3636-13ALS
W 35" D 36" H 13"

WE ARE

**EMBRACED
BY NATURE**

PAVILION[®]

Palmera™ Collection





Palmera is designed to be hospitable in demanding outdoor environments, including wind-prone rooftop, balcony, and coastal applications.

PALMERA™ COLLECTION

Inspired by the contoured embrace of a hammock and the mesmerizing effect of sunlight filtering through palm trees, Palmera lounge and dining furniture evokes daylight hours spent soaking in the rhythmic nature of the outdoors. Its leisurely comfort enchants well into the evening.



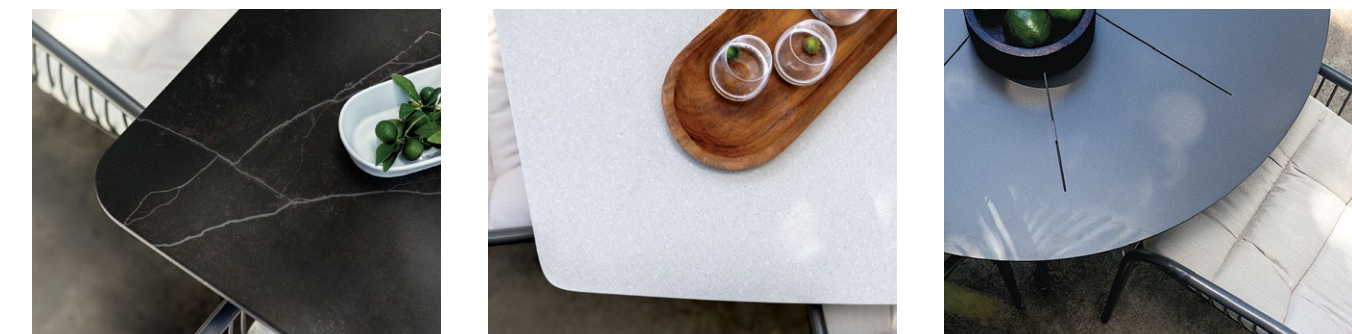
Stark Scott Studio

Palmera is the first collaboration for Stark Scott Studio, the triumvirate team of Kevin Stark, an award-winning furniture designer with an extensive background in the contract furniture industry and Lauren Stark and Phillip Scott, two Chicago based architects working on commercial buildings for a wide range of clients. All three bring rigorous design thinking to the partnership.

Photo credit: Tiny Space Studio



The gestural lines and tapered legs of Palmera chairs and dining tables subtly mimic the curve of a palm frond. Both Corian and aluminum table tops are available with the option to accept an umbrella.



Palmera dining table tops come in a variety of performance materials with a clean, frameless aesthetic. Shown here: square top in Pietra, Emperador, boat-shaped top in Corian, Savannah, and aluminum top in Terra with Ray cutout pattern.



A TRANQUIL SENSE OF PLACE

Inspired by the unique “sense of place” created by a hammock—the suspended, kinetic feeling it encourages—and its intricate, yet simple construction, Palmera provides a tranquil escape with its sculptural wireframe seat and contoured cushion.

The award-winning collection is made with meticulous detail, marrying handcraft with modern manufacturing processes. The seat heights and recline angles ensure optimal comfort for each chair. The captivating movement of the rocking chair offers a relaxing experience. Both seating and tables are scaled to strike a balance between feeling roomy and planning efficiently for contract, hospitality, and residential environments.



The interplay between Palmera chairs and tables provides casual comfort and adequate space for each guest, encouraging them to linger.

PALMERA™ COLLECTION



Rocking Chair
PL 2105L
W 27.5" D 34" H 30"
SH 16" AH 24"



Lounge Chair
PL 2100L
W 27.5" D 28" H 30"
SH 16" AH 24"



Ottoman
PL 2110L
W 22" D 20" H 14"
SH 14"



Dining Chair
PL 2030L
W 23" D 25.5" H 33.5"
SH 18" AH 24"



Side Table
PL 1819-18
D 18" H 18"
Available tops:
Glass or Aluminum, framed edge
Corian or Pietra, frameless edge



Coffee Table
PL 1837-16
D 36" H 16"
Available tops:
Glass or Aluminum, framed edge
Corian or Pietra, frameless edge

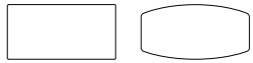


Dining Table
PL 1000-42
D 42" H 29"
Available sizes:
48" Dia.
54" Dia.
Available as Umbrella Table
Available tops:
Aluminum, Corian, Pietra



Dining Table
PL 1000-4242
W 42" D 42" H 29"
Available sizes:
48" x 48"
54" x 54"
Available as Umbrella Table
Available tops:
Aluminum, Corian, Pietra



Dining Table
PL 3100-4284B
W 84" D 42" H 29"

rectangular top boat-shaped top
Available tops:
Aluminum, Corian, Pietra



WE ARE

SCULPTORS OF SPACE

PAVILION[®]

SALITA COLLECTION





SALITA COLLECTION

Salita helps relaxed, sociable gathering spaces take shape with handcrafted, durable materials and a tailored aesthetic.

With more than 25 seating and table elements for creative placemaking, Salita delivers a refined lounge experience for outdoor areas ranging from compact to spacious.



COLIN NOURIE

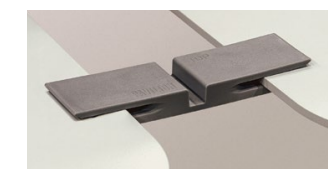
An American industrial designer and founder of the design studio, Collective Ten, Nourie has been designing furniture, lighting and systems for an enviable list of international design brands within the modern workplace, hospitality and residential markets for over two decades.

Nourie's sought-after design work has garnered numerous international accolades such as awards from the IDEA and the IIDA, as well as GOOD DESIGN, European Product Design, and NeoCon Gold awards.



CREATE YOUR IDEAL SPACE

Salita is an adaptable collection for creative placemaking. One, two, and three-seat sections connect with corner, curved, table and chaise pieces for a wide range of configurations. The durable, flexible connectors require no tools.



Seat-to-seat connection



Seat-to-table connection

Salita freestanding and modular elements allow for a boundless array of outdoor spaces that inspire a sense of discovery.



Salita offers an intimate place to welcome guests or enjoy a moment of reflection.

DISCOVER SALITA'S INVITING DESIGN



Handcrafted Construction with Enduring Performance

Crafted by hand with quality materials and attention to detail, Salita is built to last. The collection features a handwoven surround and hidden aluminum structure, giving the design casual warmth and clean lines. Rated for all-weather performance, the synthetic woven resists fading and remains supple in demanding environments. The sturdy aluminum legs and frame are finished with our Marine Primer and architectural-grade powder coat paint. The tailored cushions feature a weatherproof protective liner for lasting comfort.



Premium Mix of Materials

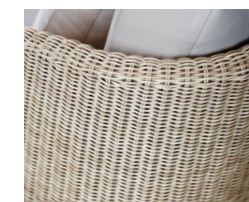
Salita provides a visually quiet aesthetic with an appealing mix of materials, from the textural woven back to the premium finish on the sculptural legs to the soft, inviting shapes of the cushions.



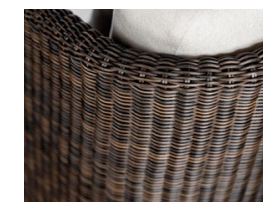
A Breadth of Finish Options

The Salita collection is available in a wide array of durable hard and soft finishes in a refined palette of complementary, high performance materials including:

- 10+ powder coat finishes
- 100+ high performance fabrics or COM
- Optional contrasting accent cushion
- Table tops in aluminum, Ecowood, Corian or Pietra
- All weather, UV-resistant synthetic woven in two colors



Sand



Kona

FREE STANDING ELEMENTS



Ottoman
SL 2110L
W 30" D 30" SH 18"



3 Seat Sofa Bench
SL 2130LB
W 92" D 30" SH 18"



Lounge Chair
SL 2100L
W 32" D 30" H 31"
SH 18" AH 25"



Loveseat
SL 2120L
W 62" D 30" H 31"
SH 18" AH 25"



2 Seat with Left Side Table
SL 2130LLT
W 92" D 30" H 31" SH 18" AH 25"



2 Seat with Right Side Table
SL 2130LRT
W 92" D 30" H 31" SH 18" AH 25"



3 Seat Sofa
SL 2130L
W 92" D 30" H 31" SH 18" AH 25"



3 Seat Sofa Left Chaise Lounge
SL 2130-2890LL
W 92" D 61" H 31" SH 18" AH 25"



3 Seat Sofa Right Chaise Lounge
SL 2130-2890LR
W 92" D 61" H 31" SH 18" AH 25"



Chaise Lounge
SL 2890L
W 32" D 61" H 31" SH 18" AH 25"



Double Chaise Lounge
SL 2890-46L
W 62" D 61" H 31" SH 18" AH 25"



Tall Side Table
SL 1819-18
Dia 19" H 18"



Round Side Table
SL 1823-16
Dia 23" H 16"



Round Coffee Table
SL 1837-12
Dia 37" H 11.5"



Square Coffee Table
SL 3131-12
W 31" D 31" H 11.5"



Rectangular Coffee Table
SL 3162-12
W 31" D 62" H 11.5"

MODULAR ELEMENTS



Center Section
SL 2160L
W 30" D 30" H 31"
SH 18"



Corner Section
SL 2170L
W 30" D 30" H 31"
SH 18"



Curved Section
SL 2190L
W 42.5" D 30" H 31"
SH 18"



2 Seat Left Arm Section
SL 2140LL
W 61" D 30" H 31" SH 18"
AH 25"



2 Seat Right Arm Section
SL 2150LR
W 61" D 30" H 31" SH 18"
AH 25"



2 Seat with Left Side Table
SL 2130LLT
W 92" D 30" H 31" SH 18" AH 25"



2 Seat with Right Side Table
SL 2130LRT
W 92" D 30" H 31" SH 18" AH 25"



3 Seat Sofa Center Section
SL 2130LC
W 90" D 30" H 31" SH 18"



3 Seat Sofa Left Arm Section
SL 2130LL
W 90" D 30" H 31" SH 18" AH 25"



3 Seat Sofa Right Arm Section
SL 2130LR
W 90" D 30" H 31" SH 18" AH 25"



3 Seat Sofa Left Arm Chaise Lounge
SL 2130-2890LLA
W 92" D 61" H 31" SH 18" AH 25"



3 Seat Sofa Right Arm Chaise Lounge
SL 2130-2890LRA
W 92" D 61" H 31" SH 18" AH 25"



Armless Chaise Lounge
SL 2890LC
W 30" D 61" H 31" SH 18"



2 Set Connector
51-11005

WE ARE

**INSPIRED BY
SUNSHINE**

PAVILION[®]

Sandcastle™ Collection





EFFORTLESSLY ELEVATED

Much like a sandcastle, with visual variation in height, this collection explores spirited ways to plan and arrange furniture. Comprised of a series of tables, barstools and umbrella base, the pieces of the Sandcastle collection can be nested and grouped to create fluid outdoor rooms.



Jones & Partners

Jones & Partners is an award-winning, multi-disciplinary design company with more than 20 years of experience. Founded by Craig Jones, this UK-based studio has an impressive portfolio spanning furniture, lighting, and battery technology, with more than 100 products in the marketplace. Creativity, sustainability, and process ground the firm's practical approach to design. The Sandcastle collection demonstrates Jones & Partners' innovative style in a tranquil series of outdoor furniture.

Timeless elements

A wide range of heights allows Sandcastle tables to be specified with virtually any lounge, dining or bar-height seat—including Sandcastle barstools—creating continuity across unique outdoor topographies.



Tables feature a simple, modern pedestal base, designed to support a broad range of applications.



Stools feature a water-resistant, soft, integral foam seat that provides elevated comfort in a tailored profile. Stools are also available with a powder-coated aluminum seat option.



Tops are offered in a curated selection of materials including smooth fiberglass, aluminum, porcelain, and engineered stone.



Local inspiration

Table and parasol bases make use of high-performance, polyester sandbags that surround the center post in a clever donut shape, providing balance and stability. These removable counterweights allow for ease of transport and optimal flexibility.



SANDCASTLE™ COLLECTION

Inspired by the fluctuating heights and cylindrical lines of a sandcastle, this fresh table and stool collection explores varying horizons and scale. Sandcastle embodies its local South Florida roots, bringing modern elegance and a coastal vibe to outdoor spaces.



PLAYFULLY SIMPLE

The round edges and smooth textures of the Sandcastle collection—accentuated by soft angles, varying heights and tapered silhouettes—evoke a whimsical spirit reminiscent of building sandcastles on the beach.



SANDCASTLE COLLECTION



Lounge Table
SD 1200-42
D 42" H 26"
SD 1200-48
D 48" H 26"



Dining Table
SD 1000-42
D 42" H 29"
SD 1000-48
D 48" H 29"



Low Occasional Table
SD 1836
D 36" H 19.25"
SD 1842
D 42" H 19.25"

Available as umbrella table.



Occasional Table
SD 2436
D 36" H 25"
SD 2442
D 42" H 25"



Counter Height Table
SD 3200-30
D 30" H 36"
SD 3200-36
D 36" H 36"



Bar Height Table
SD 3000-30
D 30" H 42"
SD 3000-36
D 36" H 42"



Counter Height Stool
SD 1515-24
D 17.5" H 24"



Bar Height Stool
SD 1515-30
D 17.5" H 24"



Parasol Base
SD 1836SF
D 18" H 24"

Tables available with Smooth Fiberglass, Aluminum, Corian and Pietra tops.